
Product Datasheet

**Fab Sheep IgG (H&L) antibody (Peroxidase)
(orb348509)**

Description

Fab Sheep IgG (H&L) antibody (Peroxidase)

Species/Host

Rabbit

Reactivity

Sheep

Conjugation

HRP

Tested

ELISA, IHC, WB

Applications
Immunogen

Sheep IgG whole molecule

Preservatives

0.01% (w/v) Gentamicin Sulfate. Do NOT add Sodium Azide!

Form/Appearance

Lyophilized

Concentration

1.0 mg/mL

Storage

Store vial at 4° C prior to restoration. For extended storage aliquot contents and freeze at -20° C or below. Avoid cycles of freezing and thawing. Centrifuge product if not completely clear after standing at room temperature. This product is stable for several weeks at 4° C as an undiluted liquid. Dilute only prior to immediate use.

Note

For research use only

Application notes

Fab Anti-Sheep IgG Peroxidase Antibody has been tested by ELISA and is suitable for immunoblotting (western or dot blot), ELISA, immunoperoxidase electron microscopy and immunohistochemistry as well as other peroxidase-antibody based enzymatic assays requiring extremely low background levels, absence of F(c) mediated binding, lot-to-lot consistency, high titer and specificity.

Isotype

IgG Fab

Clonality

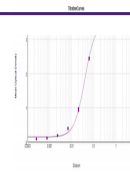
Polyclonal

Purity

This product was prepared from monospecific antiserum by immunoaffinity chromatography using Sheep IgG coupled to agarose beads followed by solid phase adsorption(s) to remove any unwanted reactivities, papain digestion and chromatographic separation. Assay by immunoelectrophoresis resulted in a single precipitin arc against anti-Peroxidase and anti-Rabbit Serum. No reaction was observed against anti-Papain or anti-Rabbit IgG F(c).

Dilution Range

ELISA: 1:10,000 - 1:50,000, IHC: 1:500 - 1:2,500, WB: 1:1,000 - 1:10,000



ELISA
Results of
Fab Rabbit
Anti-Sheep
I...