
Product Datasheet

**Fab Rabbit IgG (H&L) antibody (TRITC)
(orb348488)**

Description

Fab Rabbit IgG (H&L) antibody (TRITC)

Species/Host

Donkey

Reactivity

Rabbit

Conjugation

TRITC

Tested Applications

DOT, FC, FLISA, IF

Immunogen

Rabbit IgG whole molecule

Preservatives

0.01% (w/v) Sodium Azide

Form/Appearance

Lyophilized

Concentration

1.0 mg/mL

Storage

Store vial at 4° C prior to restoration. For extended storage aliquot contents and freeze at -20° C or below. Avoid cycles of freezing and thawing. Centrifuge product if not completely clear after standing at room temperature. This product is stable for several weeks at 4° C as an undiluted liquid. Dilute only prior to immediate use.

Note

For research use only

Application notes

Fab Anti-Rabbit IgG Rhodamine Conjugated Antibody has been tested by dot blot and is designed for immunofluorescence microscopy, fluorescence based plate assays (FLISA) and fluorescent western blotting. This product is also suitable for multiplex analysis, including multicolor imaging, utilizing various commercial platforms requiring extremely low background levels, absence of F(c) mediated binding, lot-to-lot consistency, high titer and specificity.

Isotype

IgG Fab

Clonality

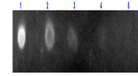
Polyclonal

Purity

This product was prepared from monospecific antiserum by immunoaffinity chromatography using Rabbit IgG coupled to agarose beads followed by solid phase adsorption(s) to remove any unwanted reactivities, papain digestion and chromatographic separation. Assay by immunoelectrophoresis resulted in a single precipitin arc against anti-Donkey Serum. No reaction was observed against anti-Papain or anti-Donkey IgG F(c).

Dilution Range

FLISA: 1:10,000 - 1:50,000, FC: 1:500 - 1:2,500, IF: 1:1,000 - 1:5,000



Dot Blot of Fab Anti-Rabbit IgG (H&L) (D...