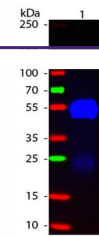

Product Datasheet

Fab Rabbit IgG (H&L) antibody (FITC) (orb348484)

Description	Fab Rabbit IgG (H&L) antibody (FITC)
Species/Host	Goat
Reactivity	Rabbit
Conjugation	FITC
Tested Applications	DOT, FLISA, IF, WB
Immunogen	Rabbit IgG whole molecule
Preservatives	0.01% (w/v) Sodium Azide
Form/Appearance	Lyophilized
Concentration	1.0 mg/mL
Storage	Store vial at 4° C prior to restoration. For extended storage aliquot contents and freeze at -20° C or below. Avoid cycles of freezing and thawing. Centrifuge product if not completely clear after standing at room temperature. This product is stable for several weeks at 4° C as an undiluted liquid. Dilute only prior to immediate use.
Note	For research use only
Application notes	Fab Anti-Rabbit IgG (H&L) Antibody has been tested by dot blot and western blot and is designed for immunofluorescence microscopy, fluorescence based plate assays (FLISA) and fluorescent western blotting. This product is also suitable for multiplex analysis, including multicolor imaging, utilizing various commercial platforms requiring extremely low background levels, absence of F(c) mediated binding, lot-to-lot consistency, high titer and specificity.
Isotype	IgG Fab
Clonality	Polyclonal
Purity	This product was prepared from monospecific antiserum by immunoaffinity chromatography using Rabbit IgG coupled to agarose beads followed by solid phase adsorption(s) to remove any unwanted reactivities, papain digestion and chromatographic separation. Assay by immunoelectrophoresis resulted in a single precipitin arc against anti-Fluorescein and anti-Goat Serum. No reaction was observed against anti-Papain or anti-Goat IgG F(c).
Dilution Range	FLISA: 1:10,000 - 1:50,000, IF: 1:1,000 - 1:5,000
Expiration Date	12 months from date of receipt.



Western blot of Fluorescein conjugated G...