
Product Datasheet

Fab Rabbit IgG (H&L) antibody (orb348483)

Description

Fab Rabbit IgG (H&L) antibody

1 2 3

Species/Host

Goat

Reactivity

Rabbit

Conjugation

Unconjugated

Tested

DOT, ELISA, IHC, WB

Applications
Immunogen

Rabbit IgG whole molecule

Preservatives

0.01% (w/v) Sodium Azide

Form/Appearance

Liquid (sterile filtered)

Concentration

1.0 mg/mL

Storage

Store vial at 4° C prior to opening. This product is stable at 4° C as an undiluted liquid. Dilute only prior to immediate use.

Note

For research use only

Application notes

Fab Anti-Rabbit IgG (H&L) Antibody has been tested by dot blot and SDS-PAGE and is suitable for highly specific immunological methods requiring extremely low background levels, absence of F(c) mediated binding, lot-to-lot consistency, high titer and specificity.

Isotype

IgG Fab

Clonality

Polyclonal

Purity

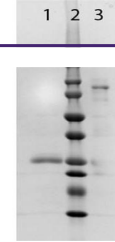
This product was prepared from monospecific antiserum by immunoaffinity chromatography using Rabbit IgG coupled to agarose beads followed by solid phase adsorption(s) to remove any unwanted reactivities, papain digestion and chromatographic separation. Assay by immunoelectrophoresis resulted in a single precipitin arc against anti-Goat Serum. No reaction was observed against anti-Papain or anti-Goat IgG F(c).

Dilution Range

ELISA: 1:4,000 - 1:20,000, IHC: 1:1,000 - 1:5,000, WB: 1:2,000 - 1:10,000

Expiration Date

12 months from date of receipt.



SDS PAGE of
Fab Anti-
RABBIT IgG
(GOAT) A...