

Product Datasheet

**Fab Mouse IgG (H&L) antibody (Biotin)
(orb348474)**

Description

Fab Mouse IgG (H&L) antibody (Biotin)

Species/Host

Goat

Reactivity

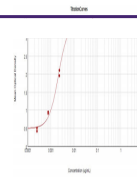
Mouse

Conjugation

Biotin

Tested

DOT, ELISA, IHC, WB

Applications

Immunogen

Mouse IgG whole molecule

Preservatives

0.01% (w/v) Sodium Azide

Form/Appearance

Lyophilized

Concentration

1.0 mg/mL

Storage

Store vial at 4° C prior to restoration. For extended storage aliquot contents and freeze at -20° C or below. Avoid cycles of freezing and thawing. Centrifuge product if not completely clear after standing at room temperature. This product is stable for several weeks at 4° C as an undiluted liquid. Dilute only prior to immediate use.

Note

For research use only

Application notes

Fab Anti-Mouse IgG (H&L) Biotin Antibody has been tested by ELISA and dot blot and is suitable for immunoblotting, ELISA, immunohistochemistry, immunomicroscopy as well as other antibody based assays using streptavidin or avidin conjugates requiring extremely low background levels, absence of F(c) mediated binding, lot-to-lot consistency, high titer and specificity.

Isotype

IgG Fab

Clonality

Polyclonal

Purity

This product was prepared from monospecific antiserum by immunoaffinity chromatography using Mouse IgG coupled to agarose beads followed by solid phase adsorption(s) to remove any unwanted reactivities, papain digestion and chromatographic separation. Assay by immunoelectrophoresis resulted in a single precipitin arc against anti-Biotin and anti-Goat Serum. No reaction was observed against anti-Papain or anti-Goat IgG F(c).

Dilution Range

ELISA: 1:200,000, IHC: 1:1,000 - 1:5,000, WB: 1:2,000 - 1:10,000

Expiration Date

12 months from date of receipt.