

---

## Product Datasheet

### Fab Human IgG (H&L) antibody (FITC) (orb348459)

**Description**

Fab Human IgG (H&amp;L) antibody (FITC)

**Species/Host**

Goat

**Reactivity**

Human

**Conjugation**

FITC

**Tested**

DOT, FC, FLISA, IF, WB

**Applications**
**Immunogen**

Human IgG whole molecule

**Preservatives**

0.01% (w/v) Sodium Azide

**Form/Appearance**

Lyophilized

**Concentration**

1.0 mg/mL

**Storage**

Store vial at 4° C prior to restoration. For extended storage aliquot contents and freeze at -20° C or below. Avoid cycles of freezing and thawing. Centrifuge product if not completely clear after standing at room temperature. This product is stable for several weeks at 4° C as an undiluted liquid. Dilute only prior to immediate use.

**Note**

For research use only

**Application notes**

Fab Anti-Human IgG (H&L) Fluorescein Antibody has been tested by dot blot and western blot and is designed for immunofluorescence microscopy, fluorescence based plate assays (FLISA) and fluorescent western blotting. This product is also suitable for multiplex analysis, including multicolor imaging, utilizing various commercial platforms. Suitable for immunomicroscopy and flow cytometry or FACS analysis as well as other antibody based fluorescent assays requiring extremely low background levels, absence of F(c) mediated binding, lot-to-lot consistency, high titer and specificity.

**Isotype**

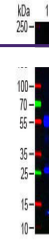
IgG Fab

**Clonality**

Polyclonal

**Purity**

This product was prepared from monospecific antiserum by immunoaffinity chromatography using Human IgG coupled to agarose beads followed by solid phase adsorption(s) to remove any unwanted reactivities, papain digestion and chromatographic separation. Assay by immunoelectrophoresis resulted in a single precipitin arc against anti-Fluorescein and anti-Goat Serum. No reaction was observed against anti-Papain or anti-Goat IgG F(c).



Western blot of Fluorescein conjugated G...