

## Product Datasheet

### Fab Human IgG (H&L) antibody (orb348458)

**Description**

Fab Human IgG (H&amp;L) antibody

**Species/Host**

Goat

**Reactivity**

Human

**Conjugation**

Unconjugated

**Tested**

DOT, ELISA, IHC, WB

**Applications**
**Immunogen**

Anti-Human IgG whole molecule was produced by repeated immunization with Human IgG whole molecule in goat.

**Preservatives**

0.01% (w/v) Sodium Azide

**Form/Appearance**

Liquid (sterile filtered)

**Concentration**

1.0 mg/mL

**Storage**

Store vial at 4° C prior to opening. This product is stable at 4° C as an undiluted liquid. Dilute only prior to immediate use.

**Note**

For research use only

**Application notes**

Fab Anti-Human IgG (H&amp;L) antibody has been tested by ELISA, SDS-PAGE, and dot blot and is ideal for investigators who routinely perform ELISA, Sandwich ELISA, titration assays, western-blot, immunoprecipitation and more generally immunoassays. Suitable for highly specific immunological methods requiring extremely low background levels, absence of F(c) mediated binding, lot-to-lot consistency, high titer and specificity.

**Isotype**

IgG Fab

**Clonality**

Polyclonal

**Purity**

This product was prepared from monospecific antiserum by immunoaffinity chromatography using Human IgG coupled to agarose beads followed by solid phase adsorption(s) to remove any unwanted reactivities, papain digestion and chromatographic separation. Assay by immunoelectrophoresis resulted in a single precipitin arc against anti-Goat Serum. No reaction was observed against anti-Papain or anti-Goat IgG F(c).

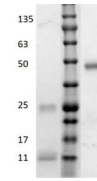
**Dilution Range**

ELISA: 1:40,000, IHC: 1:1,000 - 1:5,000, WB: 1:2,000 - 1:10,000

**Expiration Date**

12 months from date of receipt.

1 2 3


 SDS-PAGE  
results of  
Goat Fab  
Anti-Human  
...