

---

## Product Datasheet

### Fab Goat IgG antibody (Biotin) (orb348431)

**Description**

Fab Goat IgG antibody (Biotin)

**Species/Host**

Donkey

**Reactivity**

Goat

**Conjugation**

Biotin

**Tested**

ELISA, IHC, WB

**Applications**
**Immunogen**

Goat IgG whole molecule

**Preservatives**

0.01% (w/v) Sodium Azide

**Form/Appearance**

Lyophilized

**Concentration**

1.0 mg/mL

**Storage**

Store vial at 4° C prior to restoration. For extended storage aliquot contents and freeze at -20° C or below. Avoid cycles of freezing and thawing. Centrifuge product if not completely clear after standing at room temperature. This product is stable for several weeks at 4° C as an undiluted liquid. Dilute only prior to immediate use.

**Note**

For research use only

**Application notes**

Fab Anti-Goat IgG Biotin Conjugated antibody has been tested by ELISA and is suitable for immunoblotting, ELISA, immunohistochemistry, immunomicroscopy as well as other antibody based assays using streptavidin or avidin conjugates requiring extremely low background levels, absence of F(c) mediated binding, lot-to-lot consistency, high titer and specificity. Specific conditions for reactivity should be optimized by the end user.

**Isotype**

IgG Fab

**Clonality**

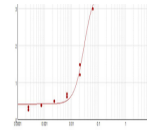
Polyclonal

**Purity**

Fab Anti-Goat IgG (H&L) was prepared from monospecific antiserum by immunoaffinity chromatography using Goat IgG coupled to agarose beads followed by solid phase adsorption(s) to remove any unwanted reactivities, papain digestion and chromatographic separation. Assay by immunoelectrophoresis resulted in a single precipitin arc against anti-Biotin and anti-Donkey Serum. No reaction was observed against anti-Papain or anti-Donkey IgG F(c).

**Dilution Range**

ELISA: 1:600,000, IHC: 1:1,000 - 1:5,000, WB: 1:5,000 - 1:20,000



ELISA results of purified Donkey Fab Ant...