

---

## Product Datasheet

**F(ab')<sub>2</sub> Sheep IgG (H&L) antibody (TRITC)  
(orb348378)**

**Description**

 F(ab')<sub>2</sub> Sheep IgG (H&L) antibody (TRITC)

**Species/Host**

Rabbit

**Reactivity**

Sheep

**Conjugation**

TRITC

**Tested**

DOT, IF

**Applications**
**Immunogen**

Sheep IgG whole molecule

**Preservatives**

0.02 M Potassium Phosphate, 0.15 M Sodium Chloride, pH 7.2

**Form/Appearance**

Lyophilized

**Concentration**

1.0 mg/mL

**Storage**

Store vial at 4° C prior to restoration. For extended storage aliquot contents and freeze at -20° C or below. Avoid cycles of freezing and thawing. Centrifuge product if not completely clear after standing at room temperature. This product is stable for several weeks at 4° C as an undiluted liquid. Dilute only prior to immediate use.

**Note**

For research use only

**Application notes**

F(ab')<sub>2</sub> Anti-Sheep IgG Rhodamine Antibody has been tested by dot blot and is designed for immunofluorescence microscopy, fluorescence based plate assays (FLISA) and fluorescent western blotting. This product is also suitable for multiplex analysis, including multicolor imaging, utilizing various commercial platforms requiring extremely low background levels, absence of F(c) mediated binding, lot-to-lot consistency, high titer and specificity.

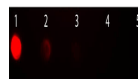
**Isotype**

 IgG F(ab')<sub>2</sub>
**Clonality**

Polyclonal

**Purity**

This product was prepared from monospecific antiserum by immunoaffinity chromatography using Sheep IgG coupled to agarose beads followed by solid phase adsorption(s) to remove any unwanted reactivities, pepsin digestion and chromatographic separation. Assay by immunoelectrophoresis resulted in a single precipitin arc against anti-Rabbit Serum, Sheep IgG and Sheep Serum. No reaction was observed against anti-Pepsin or anti-Rabbit IgG F(c).



Dot Blot of Fab2 Rabbit anti-Sheep IgG A...