
Product Datasheet

F(ab')₂ Rat IgG (H&L) antibody (FITC) (orb348342)

Description

 F(ab')₂ Rat IgG (H&L) antibody (FITC)

Species/Host

Goat

Reactivity

Rat

Conjugation

FITC

Tested

FC, FLISA, IF, WB

Applications
Immunogen

Rat IgG whole molecule

Preservatives

0.01% (w/v) Sodium Azide

Form/Appearance

Lyophilized

Concentration

0.5 mg/mL

Storage

Store vial at 4° C prior to restoration. For extended storage aliquot contents and freeze at -20° C or below. Avoid cycles of freezing and thawing. Centrifuge product if not completely clear after standing at room temperature. This product is stable for several weeks at 4° C as an undiluted liquid. Dilute only prior to immediate use.

Note

For research use only

Application notes

F(ab')₂ Anti-Rat IgG (H&L) Antibody has been tested by western blot and is designed for immunofluorescence microscopy, fluorescence based plate assays (FLISA) and fluorescent western blotting. This product is also suitable for multiplex analysis, including multicolor imaging, utilizing various commercial platforms requiring extremely low background levels, absence of F(c) mediated binding, lot-to-lot consistency, high titer and specificity.

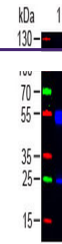
Isotype

 IgG F(ab')₂
Clonality

Polyclonal

Purity

This product was prepared from monospecific antiserum by immunoaffinity chromatography using Rat IgG coupled to agarose beads followed by solid phase adsorption(s) to remove any unwanted reactivities, pepsin digestion and chromatographic separation. Assay by immunoelectrophoresis resulted in a single precipitin arc against anti-Fluorescein, anti-Goat Serum, Rat IgG and Rat Serum. No reaction was observed against anti-Pepsin, anti-Goat IgG F(c) or Bovine, Horse, Human, Mouse, Rabbit and Sheep Serum Proteins.



Western
Blot of Goat
anti-F(ab')₂
Rat Ig...