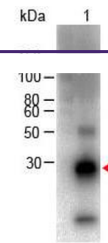

Product Datasheet

**F(ab')₂ Rabbit IgG F(c) antibody (Biotin)
(orb348313)**

Description	F(ab') ₂ Rabbit IgG F(c) antibody (Biotin)
Species/Host	Goat
Reactivity	Rabbit
Conjugation	Biotin
Tested Applications	ELISA, IHC, WB
Immunogen	Rabbit IgG F(c) fragment
Preservatives	0.01% (w/v) Sodium Azide
Form/Appearance	Lyophilized
Concentration	1.0 mg/mL
Storage	Store vial at 4° C prior to restoration. For extended storage aliquot contents and freeze at -20° C or below. Avoid cycles of freezing and thawing. Centrifuge product if not completely clear after standing at room temperature. This product is stable for several weeks at 4° C as an undiluted liquid. Dilute only prior to immediate use.
Note	For research use only
Application notes	F(ab') ₂ Anti-Rabbit IgG F(c) Biotin Antibody has been tested by SDS-PAGE and western blot and is assayed against 1.0 ug of Rabbit IgG in a standard capture ELISA using Peroxidase Conjugated Streptavidin #S000-03 and ABTS (2,2'-azino-bis-[3-ethylbenthiiazoline-6-sulfonic acid]) code # ABTS-100 as a substrate for 30 minutes at room temperature. A working dilution of 1:12,000 to 1:60,000 of the reconstitution concentration is suggested for this product. Suitable for immunomicroscopy and flow cytometry or FACS analysis as well as other antibody based fluorescent assays requiring lot-to-lot consistency.
Isotype	IgG F(ab') ₂
Clonality	Polyclonal
Purity	F(ab') fragment biotin conjugated secondary antibody was prepared from monospecific antiserum by immunoaffinity chromatography using Rabbit IgG coupled to agarose beads followed by solid phase adsorption(s) to remove any unwanted reactivities, pepsin digestion and chromatographic separation. Assay by immunoelectrophoresis resulted in a single precipitin arc against anti-Biotin, anti-Goat Serum, Rabbit IgG, Rabbit IgG F(c) and Rabbit Serum. No



Western Blot of Goat anti-F(ab')₂ Rabbit...