
Product Datasheet

**F(ab')₂ Rabbit IgG F(ab')₂ antibody (FITC)
(orb348306)**

Description

 F(ab')₂ Rabbit IgG F(ab')₂ antibody (FITC)

Species/Host

Goat

Reactivity

Rabbit

Conjugation

FITC

Tested

DOT, FC, FLISA, IF

Applications
Immunogen

 Rabbit IgG F(ab')₂ fragment

Preservatives

0.01% (w/v) Sodium Azide

Form/Appearance

Lyophilized

Concentration

1.0 mg/mL

Storage

Store vial at 4° C prior to restoration. For extended storage aliquot contents and freeze at -20° C or below. Avoid cycles of freezing and thawing. Centrifuge product if not completely clear after standing at room temperature. This product is stable for several weeks at 4° C as an undiluted liquid. Dilute only prior to immediate use.

Note

For research use only

Application notes

F(ab')₂ Anti-Rabbit IgG F(ab')₂ Fluorescein Antibody has been tested by dot blot and is designed for immunofluorescence microscopy, fluorescence based plate assays (FLISA) and fluorescent western blotting. This product is also suitable for multiplex analysis, including multicolor imaging, utilizing various commercial platforms. Suitable for immunomicroscopy and flow cytometry or FACS analysis as well as other antibody based fluorescent assays requiring extremely low background levels, absence of F(c) mediated binding, lot-to-lot consistency, high titer and specificity.

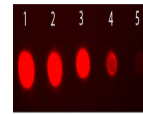
Isotype

 IgG F(ab')₂
Clonality

Polyclonal

Purity

This product was prepared from monospecific antiserum by immunoaffinity chromatography using Rabbit IgG coupled to agarose beads followed by solid phase adsorption(s) to remove any unwanted reactivities, pepsin digestion and chromatographic separation. Assay by immunoelectrophoresis resulted in a single precipitin arc against anti-Fluorescein, anti-Goat Serum, Rabbit IgG, Rabbit IgG F(ab')₂ and Rabbit Serum. No reaction was observed against anti-Pepsin, anti-Goat IgG F(c), Rabbit IgG



Dot Blot of Rabbit IgG Fab2 Antibody Flu...