

---

## Product Datasheet

**F(ab')<sub>2</sub> Rabbit IgG (H&L) antibody (FITC)  
(orb348305)**

**Description**

 F(ab')<sub>2</sub> Rabbit IgG (H&L) antibody (FITC)

**Species/Host**

Goat

**Reactivity**

Rabbit

**Conjugation**

FITC

**Tested**

DOT, FC, FLISA, IF, WB

**Applications**
**Immunogen**

Rabbit IgG whole molecule

**Preservatives**

0.01% (w/v) Sodium Azide

**Form/Appearance**

Lyophilized

**Concentration**

1.0 mg/mL

**Storage**

Store vial at 4° C prior to restoration. For extended storage aliquot contents and freeze at -20° C or below. Avoid cycles of freezing and thawing. Centrifuge product if not completely clear after standing at room temperature. This product is stable for several weeks at 4° C as an undiluted liquid. Dilute only prior to immediate use.

**Note**

For research use only

**Application notes**

F(ab')<sub>2</sub> Anti-Rabbit IgG Fluorescein Conjugated Antibody has been tested by dot blot and western blot and is designed for immunofluorescence microscopy, fluorescence based plate assays (FLISA) and fluorescent western blotting. This product is also suitable for multiplex analysis, including multicolor imaging, utilizing various commercial platforms requiring extremely low background levels, absence of F(c) mediated binding, lot-to-lot consistency, high titer and specificity.

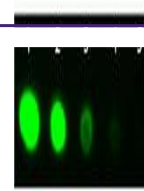
**Isotype**

 IgG F(ab')<sub>2</sub>
**Clonality**

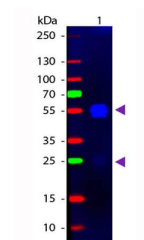
Polyclonal

**Purity**

This product was prepared from monospecific antiserum by immunoaffinity chromatography using Rabbit IgG coupled to agarose beads followed by solid phase adsorption(s) to remove any unwanted reactivities, pepsin digestion and chromatographic separation. Assay by immunoelectrophoresis resulted in a single precipitin arc against anti-Fluorescein, anti-Goat Serum, Rabbit IgG and Rabbit Serum. No reaction was observed against anti-Pepsin, anti-Goat IgG F(c) or Bovine, Chicken, Goat, Guinea Pig, Hamster, Horse, Human, Mouse, Rat and Sheep Serum Proteins.



Dot Blot of  
Goat Fab2  
anti-Rabbit  
IgG An...



Western  
blot of  
Fluorescein  
conjugated  
G...