
Product Datasheet

**F(ab')₂ Rabbit IgG (H&L) antibody (RPE)
(orb348299)**

Description

 F(ab')₂ Rabbit IgG (H&L) antibody (RPE)

Species/Host

Goat

Reactivity

Rabbit

Conjugation

RPE

Tested Applications

DOT, FC, IF

Immunogen

Rabbit IgG whole molecule

Preservatives

0.01% (w/v) Sodium Azide

Form/Appearance

Lyophilized

Concentration

0.5 mg/mL

Storage

Store vial at 4° C prior to restoration. Restore with deionized water (or equivalent). This product is stable at 4° C as an undiluted liquid. Dilute only prior to immediate use. Centrifuge product if not completely clear after standing at room temperature. Do not freeze after reconstitution. Store reagent in the dark. Use subdued lighting during handling and incubation of cells prior to analysis.

Note

For research use only

Application notes

F(ab')₂ Anti-Rabbit IgG Phycoerythrin Conjugated Secondary Antibody has been tested by dot blot and is ideal for ELISA, western blotting, Immunohistochemistry, as well as other antibody detection methods.

Isotype

 IgG F(ab')₂
Clonality

Polyclonal

Purity

This product was prepared from monospecific antiserum by immunoaffinity chromatography using Rabbit IgG coupled to agarose beads followed by pepsin digestion and chromatographic separation. Coupling to R-PE was followed by size exclusion chromatography to purify conjugate from unreacted R-PE and antibody. Assay by immunoelectrophoresis resulted in a single precipitin arc against anti-Phycoerythrin, anti-Goat Serum, Rabbit IgG and Rabbit Serum. No reaction was observed against anti-Pepsin or anti-Goat IgG F(c).

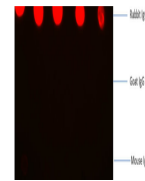
Dilution Range

FC: 1:100 - 1:250, IF: 1:100 - 1:250

Expiration Date

12 months from date of receipt.

1 2 3 4 5



Dot Blot of Fab2 Goat anti-Rabbit IgG An...