

## Product Datasheet

### F(ab')<sub>2</sub> Mouse IgG (H&L) Antibody Pre-Adsorbed (orb348275)

<b>Description</b>	F(ab') <sub>2</sub> MOUSE IgG (H&L) antibody
<b>Species/Host</b>	Rabbit
<b>Reactivity</b>	Mouse
<b>Conjugation</b>	Unconjugated
<b>Tested Applications</b>	ELISA, IHC, WB
<b>Immunogen</b>	Anti-Mouse IgG was produced by repeated immunization with Mouse IgG whole molecule in goat.
<b>Preservatives</b>	0.01% (w/v) Sodium Azide
<b>Form/Appearance</b>	Liquid (sterile filtered)
<b>Concentration</b>	1.1 mg/mL
<b>Storage</b>	Store vial at 4° C prior to opening. This product is stable for several weeks at 4° C as an undiluted liquid. Dilute only prior to immediate use. For extended storage aliquot contents and freeze at -20° C or below. Avoid cycles of freezing and thawing.
<b>Note</b>	For research use only
<b>Application notes</b>	F(ab') <sub>2</sub> Mouse IgG (H&L) Antibody has been tested by ELISA and SDS-PAGE and is suitable for immunomicroscopy and flow cytometry or FACS analysis as well as other antibody based fluorescent assays requiring extremely low background levels, absence of F(c) mediated binding, lot-to-lot consistency, high titer and specificity. The maximum amount of reagent required to stain 1 x 10 <sup>6</sup> cells in flow cytometry is approximately 1.0 µg of antibody. Lesser amounts of reagent may be sufficient for staining. Optimal titers for other applications should be determined by the researcher. As a general guideline dilutions of 1:100 to 1:250 should be suitable for most applications.

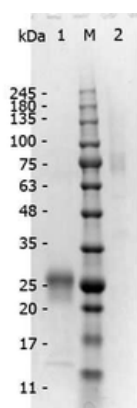
#### Biorbyt Ltd.

7 Signet Court, Swann's Road,  
Cambridge, CB5 8LA, United Kingdom  
Email: [info@biorbyt.com](mailto:info@biorbyt.com), [support@biorbyt.com](mailto:support@biorbyt.com)  
Phone: [+44 \(0\) 1223 859-353](tel:+44(0)1223859353) | Fax: [+1 \(415\) 651-8558](tel:+1(415)6518558)

#### Biorbyt LLC.

68 TW Alexander Drive,  
Durham, NC, 27713, United States  
Email: [info@biorbyt.com](mailto:info@biorbyt.com), [support@biorbyt.com](mailto:support@biorbyt.com)  
Phone: [+1 \(415\) 906-5211](tel:+1(415)9065211) | Fax: [+1 \(415\) 651-8558](tel:+1(415)6518558)

<b>Isotype</b>	IgG F(ab') <sub>2</sub>
<b>Clonality</b>	Polyclonal
<b>Purity</b>	This product was prepared from monospecific antiserum by immunoaffinity chromatography using Mouse IgG coupled to agarose beads followed by solid phase adsorption(s) to remove any unwanted reactivities, pepsin digestion and chromatographic separation. Assay by immunoelectrophoresis resulted in a single precipitin arc against anti-Rabbit Serum, Mouse IgG and Mouse Serum. No reaction was observed against anti-Pepsin, anti-Rabbit IgG F(c) or Human Serum Proteins.
<b>Dilution Range</b>	ELISA: 1:2,000 - 1:20,000, IHC: 1:1,000 - 1:5,000, WB: 1:1,000 - 1:10,000
<b>Expiration Date</b>	12 months from date of receipt.



SDS-PAGE of F(ab')<sub>2</sub> Rabbit anti-Mouse IgG Antibody min x Human serum proteins. Lane 1: Reduced F(ab')<sub>2</sub> Rabbit anti-Mouse IgG Antibody min x Human serum proteins. Lane 2: 5 µl OPAL Pre-stained Marker. Lane 3: Non-reduced F(ab')<sub>2</sub> Rabbit anti-Mouse IgG Antibody min x Human serum proteins. Load: 1 µg per lane. Predicted/Observed size: Non-reduced at 75 kDa, Reduced at 25 kDa.

**Biorbyt Ltd.**

7 Signet Court, Swann's Road,  
Cambridge, CB5 8LA, United Kingdom  
Email: [info@biorbyt.com](mailto:info@biorbyt.com), [support@biorbyt.com](mailto:support@biorbyt.com)  
Phone: [+44 \(0\) 1223 859-353](tel:+44(0)1223859353) | Fax: [+1 \(415\) 651-8558](tel:+1(415)6518558)

**Biorbyt LLC.**

68 TW Alexander Drive,  
Durham, NC, 27713, United States  
Email: [info@biorbyt.com](mailto:info@biorbyt.com), [support@biorbyt.com](mailto:support@biorbyt.com)  
Phone: [+1 \(415\) 906-5211](tel:+1(415)9065211) | Fax: [+1 \(415\) 651-8558](tel:+1(415)6518558)