
Product Datasheet

**F(ab')₂ Mouse IgG (H&L) antibody (Biotin)
(orb348264)**

Description

 F(ab')₂ Mouse IgG (H&L) antibody (Biotin)

Species/Host

Goat

Reactivity

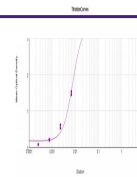
Mouse

Conjugation

Biotin

Tested

ELISA, IHC, WB

Applications

 ELISA
Results of
Goat
F(ab')₂ Anti-
Mouse...

Immunogen

Mouse IgG whole molecule was produced by repeated immunization with Mouse IgG whole molecule in goat.

Preservatives

0.01% (w/v) Sodium Azide

Form/Appearance

Lyophilized

Concentration

1.0 mg/mL

Storage

Store vial at 4° C prior to restoration. For extended storage aliquot contents and freeze at -20° C or below. Avoid cycles of freezing and thawing. Centrifuge product if not completely clear after standing at room temperature. This product is stable for several weeks at 4° C as an undiluted liquid. Dilute only prior to immediate use.

Note

For research use only

Application notes

F(ab')₂ Anti-Mouse IgG (H&L) (GOAT) Antibody has been tested by ELISA and is suitable for immunomicroscopy and flow cytometry or FACS analysis as well as other antibody based fluorescent assays requiring extremely low background levels, absence of F(c) mediated binding, lot-to-lot consistency, high titer and specificity.

Isotype

 IgG F(ab')₂
Clonality

Polyclonal

Purity

F(ab')₂ Anti-Mouse IgG (H&L) (GOAT) Antibody was prepared from monospecific antiserum by immunoaffinity chromatography using Mouse IgG coupled to agarose beads followed by solid phase adsorption(s) to remove any unwanted reactivities, pepsin digestion and chromatographic separation. Assay by immunoelectrophoresis resulted in a single precipitin arc against anti-Biotin, anti-Goat Serum, Mouse IgG and Mouse Serum. No reaction was observed against anti-Pepsin, anti-Goat IgG F(c) or Bovine, Horse, Human, Rabbit, Rat and Sheep Serum Proteins.