

---

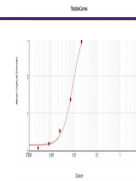
## Product Datasheet

**F(ab')<sub>2</sub> MOUSE IgM (mu chain) antibody  
(Peroxidase) (orb348251)**

**Description**

 F(ab')<sub>2</sub> MOUSE IgM (mu chain) antibody

<b>Species/Host</b>	Goat
<b>Reactivity</b>	Mouse
<b>Conjugation</b>	HRP
<b>Tested Applications</b>	ELISA, IHC, WB
<b>Immunogen</b>	Mouse IgM whole molecule
<b>Preservatives</b>	0.01% (w/v) Gentamicin Sulfate. Do NOT add Sodium Azide!
<b>Form/Appearance</b>	Lyophilized
<b>Concentration</b>	1.0 mg/mL
<b>Storage</b>	Store vial at 4° C prior to restoration. For extended storage aliquot contents and freeze at -20° C or below. Avoid cycles of freezing and thawing. Centrifuge product if not completely clear after standing at room temperature. This product is stable for several weeks at 4° C as an undiluted liquid. Dilute only prior to immediate use.
<b>Note</b>	For research use only
<b>Application notes</b>	F(ab') <sub>2</sub> Anti-Mouse IgM mu heavy chain peroxidase conjugated antibody has been tested by ELISA and is suitable for use in immunoelectrophoresis, western-blot, competitive western-blot, ELISA and competitive ELISA assays. Specific conditions for reactivity and signal detection should be optimized by the end user.
<b>Isotype</b>	IgG F(ab') <sub>2</sub>
<b>Clonality</b>	Polyclonal
<b>Purity</b>	This product was prepared from monospecific antiserum by immunoaffinity chromatography using Mouse IgM coupled to agarose beads followed by solid phase adsorption(s) to remove any unwanted reactivities, pepsin digestion and chromatographic separation. Assay by immunoelectrophoresis resulted in a single precipitin arc against anti-Peroxidase, anti-Goat Serum, Mouse IgM and Mouse Serum. No reaction was observed against anti-Pepsin or anti-Goat IgG F(c). No reaction was observed against other mouse heavy or light chain proteins



ELISA  
Results of  
F(ab')<sub>2</sub>  
Goat Anti-  
Mouse...