

Product Datasheet

F(ab')₂ Human IgG (H&L) Antibody Phycoerythrin Conjugated Pre-Adsorbed (orb348204)

Description	F(ab') ₂ Human IgG (H&L) antibody (RPE)
Species/Host	Goat
Reactivity	Human
Conjugation	RPE
Tested Applications	DOT, FC, IF
Immunogen	Anti-Human IgG (H&L) was produced by repeated immunization with human IgG whole molecule in goat.
Preservatives	0.05% (w/v) Sodium Azide
Form/Appearance	Lyophilized
Concentration	0.5 mg/mL
Storage	Store vial at 4° C prior to restoration. Restore with deionized water (or equivalent). This product is stable at 4° C as an undiluted liquid. Dilute only prior to immediate use. Centrifuge product if not completely clear after standing at room temperature. Do not freeze after reconstitution. Store reagent in the dark. Use subdued lighting during handling and incubation of cells prior to analysis.
Note	For research use only

Biorbyt Ltd.

7 Signet Court, Swann's Road,
Cambridge, CB5 8LA, United Kingdom
Email: info@biorbyt.com, support@biorbyt.com
Phone: [+44 \(0\) 1223 859-353](tel:+44(0)1223859353) | Fax: [+1 \(415\) 651-8558](tel:+1(415)6518558)

Biorbyt LLC.

68 TW Alexander Drive,
Durham, NC, 27713, United States
Email: info@biorbyt.com, support@biorbyt.com
Phone: [+1 \(415\) 906-5211](tel:+1(415)9065211) | Fax: [+1 \(415\) 651-8558](tel:+1(415)6518558)

Application notes

Human F(ab')₂ IgG (H&L) phycoerythrin conjugated antibody has been tested by dot blot and is suitable for immunomicroscopy and flow cytometry or FACS analysis as well as other antibody based fluorescent assays requiring extremely low background levels, absence of F(c) mediated binding, lot-to-lot consistency, high titer and specificity. The maximum amount of reagent required to stain 1 x 10⁶ cells in flow cytometry is approximately 1.0 µg of antibody conjugate. Lesser amounts of reagent may be sufficient for staining. Optimal titers for other applications should be determined by the researcher. As a general guideline dilutions of 1:100 to 1:250 should be suitable for most applications.

IsotypeIgG F(ab')₂**Clonality**

Polyclonal

Purity

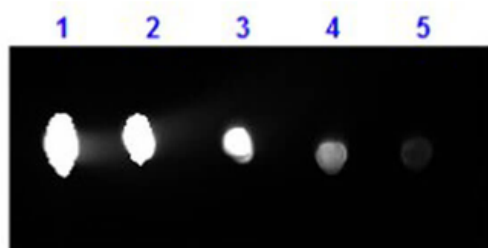
This product was prepared from monospecific antiserum by immunoaffinity chromatography using Human IgG coupled to agarose beads followed by solid phase adsorption(s) to remove any unwanted reactivities, pepsin digestion and chromatographic separation. Assay by immunoelectrophoresis resulted in a single precipitin arc against anti-Phycoerythrin, anti-Goat Serum, Human IgG and Human Serum. No reaction was observed against anti-Pepsin, anti-Goat IgG F(c), or Bovine, Horse, Mouse and Rat Serum Proteins.

Dilution Range

FC: 1:100 - 1:250, IF: 1:100 - 1:250

Expiration Date

12 months from date of receipt.



Dot Blot results of Goat F(ab')₂ Anti-Human IgG Antibody Phycoerythrin Conjugated. Dots are Human IgG at (1) 100 ng, (2) 33.3 ng, (3) 11.1 ng, (4) 3.70 ng, (5) 1.23 ng. Blocking: orb348637 for 60 min at RT. Primary Antibody: none. Secondary Antibody: Goat F(ab')₂ Anti-Human IgG Antibody RPE at 1 µg/ml for 1hr at RT.

Biorbyt Ltd.

7 Signet Court, Swann's Road,
Cambridge, CB5 8LA, United Kingdom
Email: info@biorbyt.com, support@biorbyt.com
Phone: [+44 \(0\) 1223 859-353](tel:+44(0)1223859353) | Fax: [+1 \(415\) 651-8558](tel:+1(415)6518558)

Biorbyt LLC.

68 TW Alexander Drive,
Durham, NC, 27713, United States
Email: info@biorbyt.com, support@biorbyt.com
Phone: [+1 \(415\) 906-5211](tel:+1(415)9065211) | Fax: [+1 \(415\) 651-8558](tel:+1(415)6518558)