

Product Datasheet

F(ab')₂ Human IgG Fc Antibody Alkaline Phosphatase Conjugated Pre-Adsorbed (orb348195)

Description	F(ab') ₂ Human IgG F(c) antibody (Alkaline Phosphatase)
Species/Host	Goat
Reactivity	Human
Conjugation	AP
Tested Applications	DOT, ELISA, IHC, WB
Immunogen	Human IgG F(c) fragment
Preservatives	0.05% (w/v) Sodium Azide
Form/Appearance	Liquid (sterile filtered)
Concentration	1.0 mg/mL
Storage	Store vial at 4° C before opening. DO NOT FREEZE. This product is stable at 4° C as an undiluted liquid. Dilute only prior to immediate use. Freezing alkaline phosphatase conjugates will result in a substantial loss of enzymatic activity.
Note	For research use only
Application notes	F(ab') ₂ Anti-Human IgG F(c) Alkaline Phosphatase Antibody has been tested by dot blot and is assayed against 1.0 µg of Human IgG in a standard capture ELISA using pNPP p-nitrophenyl phosphate code # NPP-10 as a substrate for 30 minutes at room temperature. A working dilution of 1:4,000 to 1:20,000 of the reconstitution concentration is suggested for this product. Suitable for immunomicroscopy and flow cytometry or FACS analysis as well as other antibody based fluorescent assays requiring lot-to-lot consistency.
Isotype	IgG F(ab') ₂

Biorbyt Ltd.

7 Signet Court, Swann's Road,
Cambridge, CB5 8LA, United Kingdom
Email: info@biorbyt.com, support@biorbyt.com
Phone: [+44 \(0\) 1223 859-353](tel:+44(0)1223859353) | Fax: [+1 \(415\) 651-8558](tel:+1(415)6518558)

Biorbyt LLC.

68 TW Alexander Drive,
Durham, NC, 27713, United States
Email: info@biorbyt.com, support@biorbyt.com
Phone: [+1 \(415\) 906-5211](tel:+1(415)9065211) | Fax: [+1 \(415\) 651-8558](tel:+1(415)6518558)

Clonality

Polyclonal

Purity

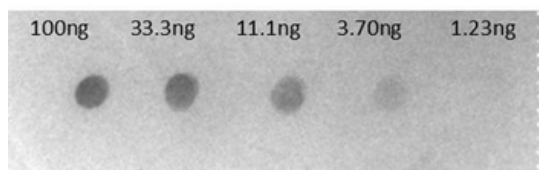
This product was prepared from monospecific antiserum by immunoaffinity chromatography using Human IgG coupled to agarose beads followed by solid phase adsorption(s) to remove any unwanted reactivities, pepsin digestion and chromatographic separation. Assay by immunoelectrophoresis resulted in a single precipitin arc against anti-Alkaline Phosphatase, anti-Goat Serum, Human IgG, Human IgG F(c) and Human Serum. No reaction was observed against anti-Pepsin, anti-Goat IgG F(c), Human IgG F(ab) or Bovine, Horse, Mouse and Rat Serum Proteins.

Dilution Range

ELISA: 1:2,000 - 1:10,000, IHC: 1:200 - 1:1,000, WB: 1:500 - 1:2,500

Expiration Date

12 months from date of receipt.



Dot Blot of Goat F(ab')₂ Anti-HUMAN IgG F(c) Alkaline Phosphatase Conjugated Antibody Min X Bv Hs Ms & Rt Serum Proteins. Lane 1: 100 ng hu IgG. Lane 2: 33.3 ng hu IgG. Lane 3: 11.1 ng hu IgG. Lane 4: 3.70 ng hu IgG. Lane 5: 1.23 ng hu IgG. Secondary Antibody: Gt-F(ab')₂ anti-Hu IgG Fc Alk Phos at 1 µg/ml. Blocking Buffer: BlockOut orb348644 for 30 min at RT.

Biorbyt Ltd.

7 Signet Court, Swann's Road,
Cambridge, CB5 8LA, United Kingdom
Email: info@biorbyt.com, support@biorbyt.com
Phone: [+44 \(0\) 1223 859-353](tel:+44(0)1223859353) | Fax: [+1 \(415\) 651-8558](tel:+1(415)6518558)

Biorbyt LLC.

68 TW Alexander Drive,
Durham, NC, 27713, United States
Email: info@biorbyt.com, support@biorbyt.com
Phone: [+1 \(415\) 906-5211](tel:+1(415)9065211) | Fax: [+1 \(415\) 651-8558](tel:+1(415)6518558)