

---

## Product Datasheet

**F(ab')<sub>2</sub> Goat IgG (H&L) antibody (FITC)  
(orb348123)**

**Description**

 F(ab')<sub>2</sub> Goat IgG (H&L) antibody (FITC)

**Species/Host**

Donkey

**Reactivity**

Goat

**Conjugation**

FITC

**Tested Applications**

DOT, FC, FLISA, IF

**Immunogen**

Goat IgG whole molecule

**Preservatives**

0.01% (w/v) Sodium Azide

**Form/Appearance**

Lyophilized

**Concentration**

1.0 mg/mL

**Storage**

Store vial at 4° C prior to restoration. For extended storage aliquot contents and freeze at -20° C or below. Avoid cycles of freezing and thawing. Centrifuge product if not completely clear after standing at room temperature. This product is stable for several weeks at 4° C as an undiluted liquid. Dilute only prior to immediate use.

**Note**

For research use only

**Application notes**

F(ab')<sub>2</sub> Anti-Goat IgG Fluorescein Antibody has been tested by dot blot and is suitable for immunomicroscopy and flow cytometry or FACS analysis as well as other antibody based fluorescent assays requiring extremely low background levels, absence of F(c) mediated binding, lot-to-lot consistency, high titer and specificity.

**Isotype**

 IgG F(ab')<sub>2</sub>
**Clonality**

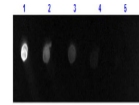
Polyclonal

**Purity**

This product was prepared from monospecific antiserum by immunoaffinity chromatography using Goat IgG coupled to agarose beads followed by solid phase adsorption(s) to remove any unwanted reactivities, pepsin digestion and chromatographic separation. Assay by immunoelectrophoresis resulted in a single precipitin arc against anti-Fluorescein, anti-Donkey Serum, Goat IgG and Goat Serum. No reaction was observed against anti-Pepsin, anti-Donkey IgG F(c) or Chicken, Guinea Pig, Hamster, Horse, Human, Mouse, Rabbit and Rat Serum Proteins.

**Dilution Range**

FLISA: 1:10,000 - 1:50,000, FC: 1:500 - 1:2,500, IF: 1:1,000 - 1:5,000



Dot Blot results of Donkey F(ab')<sub>2</sub> Anti-  
...