
Product Datasheet

F(ab')₂ Goat IgG (H&L) antibody (orb348122)

Description

 F(ab')₂ Goat IgG (H&L) antibody

Species/Host

Donkey

Reactivity

Goat

Conjugation

Unconjugated

Tested Applications

DOT, ELISA, IHC, WB

Immunogen

Goat IgG whole molecule

Preservatives

0.01% (w/v) Sodium Azide

Form/Appearance

Liquid (sterile filtered)

Concentration

1.0 mg/mL

Storage

Store vial at 4° C prior to opening. This product is stable for several weeks at 4° C as an undiluted liquid. Dilute only prior to immediate use. For extended storage aliquot contents and freeze at -20° C or below. Avoid cycles of freezing and thawing.

Note

For research use only

Application notes

F(ab')₂ Anti-Goat IgG Antibody has been tested by SDS-PAGE and dot blot and is suitable for immunomicroscopy and flow cytometry or FACS analysis as well as other antibody based fluorescent assays requiring extremely low background levels, absence of F(c) mediated binding, lot-to-lot consistency, high titer and specificity. The maximum amount of reagent required to stain 1 x 10⁶ cells in flow cytometry is approximately 1.0 µg of antibody. Lesser amounts of reagent may be sufficient for staining. Optimal titers for other applications should be determined by the researcher. As a general guideline dilutions of 1:100 to 1:250 should be suitable for most applications.

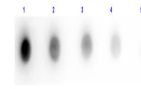
Isotype

 IgG F(ab')₂
Clonality

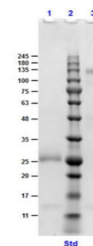
Polyclonal

Purity

This product was prepared from monospecific antiserum by immunoaffinity chromatography using Goat IgG coupled to agarose beads followed by solid phase adsorption(s) to remove any unwanted reactivities, pepsin digestion and chromatographic separation. Assay by immunoelectrophoresis resulted in a single precipitin arc against anti-Donkey Serum, Goat IgG and Goat Serum. No reaction was observed against anti-Pepsin, anti-Donkey IgG F(c) or Chicken, Guinea Pig, Hamster, Horse, Human, Mouse, Rabbit



Dot Blot
Results of
F(ab')₂
Donkey Anti-
...



SDS PAGE
Results of
F(ab')₂ Anti-
GOAT Ig...