
Product Datasheet

Monkey IgM (mu chain) antibody (Alkaline Phosphatase) (orb348022)

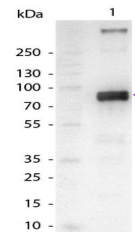
Description

Monkey IgM (mu chain) antibody (Alkaline)

Species/Host	Goat
Reactivity	Monkey
Conjugation	AP
Tested Applications	ELISA, IHC, WB
Immunogen	Monkey IgM whole molecule
Preservatives	0.01% (w/v) Sodium Azide
Form/Appearance	Liquid (sterile filtered)
Concentration	1.0 mg/mL
Storage	Store vial at 4° C before opening. DO NOT FREEZE. This product is stable at 4° C as an undiluted liquid. Dilute only prior to immediate use. Freezing alkaline phosphatase conjugates will result in a substantial loss of enzymatic activity.
Note	For research use only
Application notes	Anti-Monkey IgM (mu chain) Alkaline Phosphatase Conjugate Antibody has been tested by ELISA and western blot and is suitable for immunoblotting (western or dot blot), ELISA, immunoperoxidase electron microscopy and immunohistochemistry as well as other peroxidase-antibody based enzymatic assays requiring lot-to-lot consistency. Specific conditions for reactivity should be optimized by the end user.
Isotype	IgG
Clonality	Polyclonal
Purity	Anti-Monkey IgM (mu chain) Antibody was prepared from monospecific antiserum by immunoaffinity chromatography using Monkey IgM coupled to agarose beads followed by solid phase adsorption(s) to remove any unwanted reactivities. Assay by immunoelectrophoresis resulted in a single precipitin arc against anti-Alkaline Phosphatase (calf intestine), anti-Goat Serum, Monkey IgM and Monkey Serum. No reaction was observed against other Monkey heavy or light chain proteins.
Dilution Range	ELISA: 1:2,000 - 1:10,000, IHC: 1:200 - 1:1,000, WB: 1:500 - 1:3,000

Product	Anti-Mouse IgG	Anti-Human IgG	Anti-Mouse IgM
Human Serum	+	+	+
Mouse Serum	+	+	+
Chimpanzee Serum	+	+	+
Human IgG	+		
Human IgM		+	
Human IgA			+

This table displays additional reactivit...



Western Blot of Alkaline Phosphatase Con...