
Product Datasheet

Monkey IgG (gamma chain) antibody (FITC) (orb348015)

Description

Monkey IgG (gamma chain) antibody (FITC)

Species/Host

Goat

Reactivity

Monkey

Conjugation

FITC

Tested

DOT, FC, FLISA, IF, WB

Applications
Immunogen

Monkey IgG gamma heavy chain

Preservatives

0.01% (w/v) Sodium Azide

Form/Appearance

Lyophilized

Concentration

1.0 mg/mL

Storage

Store vial at 4° C prior to restoration. For extended storage aliquot contents and freeze at -20° C or below. Avoid cycles of freezing and thawing. Centrifuge product if not completely clear after standing at room temperature. This product is stable for several weeks at 4° C as an undiluted liquid. Dilute only prior to immediate use.

Note

For research use only

Application notes

Anti-Monkey IgG Fluorescein has been tested by dot blot and western blot and is designed for immunofluorescence microscopy, fluorescence based plate assays (FLISA) and fluorescent western blotting. This product is also suitable for multiplex analysis, including multicolor imaging, utilizing various commercial platforms.

Isotype

IgG

Clonality

Polyclonal

Purity

This product was prepared from monospecific antiserum by immunoaffinity chromatography using Monkey IgG coupled to agarose beads followed by solid phase adsorption(s) to remove any unwanted reactivities. Assay by immunoelectrophoresis resulted in a single precipitin arc against anti-fluorescein, anti-Goat Serum, Monkey IgG and Monkey Serum.

Dilution Range

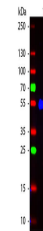
FLISA: 1:10,000 - 1:50,000, FC: 1:500 - 1:2,500, IF: 1:1,000 - 1:5,000

Expiration Date

12 months from date of receipt.

Product	Dot Blot/IF	FC/ELISA	WB
Human Serum	+	+	+
Goat Serum	+	+	+
Control IgG	+	+	+
Human IgG	+	+	+
Human IgM	+	+	+
Human IgA	+	+	+

This table displays additional reactivit...



Western Blot of Fluorescein conjugated G...