
Product Datasheet

Monkey IgG gamma antibody (orb348011)

Description

Monkey IgG gamma antibody

Species/Host

Goat

Reactivity

Monkey

Conjugation

Unconjugated

Tested Applications

DOT, ELISA, IHC, WB

Immunogen

Anti-Monkey IgG (gamma chain) was produced by repeated immunization with monkey IgG gamma heavy chain in goat.

Preservatives

0.01% (w/v) Sodium Azide. 0.02 M Potassium Phosphate, 0.15 M Sodium Chloride, pH 7.2

Form/Appearance

Liquid (sterile filtered)

Concentration

1.26 mg/mL

Storage

Store vial at 4° C prior to opening. This product is stable for several weeks at 4° C as an undiluted liquid. Dilute only prior to immediate use. For extended storage aliquot contents and freeze at -20° C or below. Avoid cycles of freezing and thawing.

Note

For research use only

Application notes

Anti-Monkey IgG (gamma chain) has been tested by ELISA, dot blot, and western blot and is suitable for use in immunoelectrophoresis, western-blot, competitive western-blot, ELISA and competitive ELISA assays. Specific conditions for reactivity and signal detection should be optimized by the end user.

Isotype

IgG

Clonality

Polyclonal

Purity

This product was prepared from monospecific antiserum by immunoaffinity chromatography using Monkey IgG coupled to agarose beads followed by solid phase adsorption(s) to remove any unwanted reactivities. Assay by immunoelectrophoresis resulted in a single precipitin arc against anti-Goat Serum, Monkey IgG and Monkey Serum.

Dilution Range

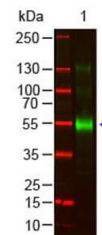
ELISA: 1:75000 - 1:175,000, IHC: 1:1,000 - 1:5,000, WB: 1:2,000 - 1:10,000

Expiration Date

12 months from date of receipt.

Product	Goat/Monkey IgG	Goat/Monkey IgM	Goat/Monkey IgA
Human Serum	+	+	+
Bovine Serum	+	+	+
Chicken Serum	+	+	+
Human IgG	+		
Human IgM		+	
Human IgA			+

This table displays additional reactivit...



Western Blot of Goat anti-Monkey IgG gam...