

---

## Product Datasheet

### Monkey IgM (mu chain) antibody (orb348010)

**Description**

Monkey IgM (mu chain) antibody

**Species/Host**

Goat

**Reactivity**

Monkey

**Conjugation**

Unconjugated

**Tested Applications**

DOT, ELISA, IHC, WB

**Immunogen**

Monkey IgM whole molecule

**Preservatives**

0.01% (w/v) Sodium Azide. 0.02 M Potassium Phosphate, 0.15 M Sodium Chloride, pH 7.2

**Form/Appearance**

Liquid (sterile filtered)

**Concentration**

1.05 mg/mL

**Storage**

Store vial at 4° C prior to opening. This product is stable for several weeks at 4° C as an undiluted liquid. Dilute only prior to immediate use. For extended storage aliquot contents and freeze at -20° C or below. Avoid cycles of freezing and thawing.

**Note**

For research use only

**Application notes**

Anti-Monkey IgM (mu chain) has been tested by ELISA, SDS-PAGE, dot blot, and western blot and is suitable for use in immunoelectrophoresis, western-blot, competitive western-blot, ELISA and competitive ELISA assays. Specific conditions for reactivity and signal detection should be optimized by the end user.

**Isotype**

IgG

**Clonality**

Polyclonal

**Purity**

This product was prepared from monospecific antiserum by immunoaffinity chromatography using Monkey IgM coupled to agarose beads followed by solid phase adsorption(s) to remove any unwanted reactivities. Assay by immunoelectrophoresis resulted in a single precipitin arc against anti-Goat Serum, Monkey IgM and Monkey Serum. No reaction was observed against other monkey heavy or light chain proteins.

**Dilution Range**

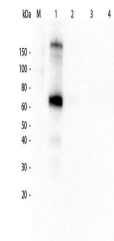
ELISA: 1:16,700 - 1:17,700, IHC: 1:500 - 1:2,500, WB: 1:1,000 - 1:5,000

**Expiration Date**

12 months from date of receipt.

Product	Reactivity IgG	Reactivity IgM	Reactivity IgA
Goat Serum	+	+	+
Human Serum	+	+	+
Control Serum	+	+	+
Human IgG	+	+	+
Human IgM	+	+	+
Human IgA	+	+	+

This table displays additional reactivit...



Western Blot of Goat anti-Monkey IgM (mu...