
Product Datasheet

Sheep IgG (H&L) antibody (Biotin) (orb347961)

Description

Sheep IgG (H&L) antibody (Biotin)

Species/Host

Donkey

Reactivity

Sheep

Conjugation

Biotin

Tested

ELISA, IHC, WB

Applications
Immunogen

Anti-Sheep IgG whole molecule was produced by repeated immunization with Sheep IgG whole molecule in donkey.

Preservatives

0.01% (w/v) Sodium Azide

Form/Appearance

Lyophilized

Concentration

2.0 mg/mL

Storage

Store vial at 4° C prior to restoration. For extended storage aliquot contents and freeze at -20° C or below. Avoid cycles of freezing and thawing. Centrifuge product if not completely clear after standing at room temperature. This product is stable for several weeks at 4° C as an undiluted liquid. Dilute only prior to immediate use.

Note

For research use only

Application notes

Anti-Sheep IgG Biotin Conjugated Antibody has been tested by ELISA and is suitable for use in immunoelectrophoresis, western-blot, competitive western-blot, ELISA and competitive ELISA assays. Specific conditions for reactivity and signal detection should be optimized by the end user.

Isotype

IgG

Clonality

Polyclonal

Purity

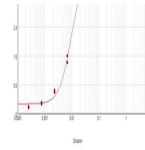
Anti-Sheep IgG antibody was prepared from monospecific antiserum by immunoaffinity chromatography using Sheep IgG coupled to agarose beads followed by solid phase adsorption(s) to remove any unwanted reactivities. Assay by immunoelectrophoresis resulted in a single precipitin arc against anti-biotin, anti-Donkey Serum, Sheep IgG and Sheep Serum.

Dilution Range

ELISA: 1:20,000 - 1:100,000, IHC: 1:1,000 - 1:5,000, WB: 1:2,000 - 1:10,000

Expiration Date

12 months from date of receipt.



ELISA results of purified Donkey anti-Sh...