

---

## Product Datasheet

### Sheep IgG (H&L) antibody (orb347957)

**Description**

Sheep IgG (H&amp;L) antibody

**Species/Host**

Donkey

**Reactivity**

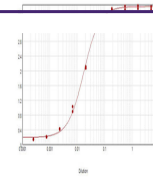
Sheep

**Conjugation**

Unconjugated

**Tested**

ELISA, IHC, WB

**Applications**


ELISA results of purified ELISA of Donke...

**Immunogen**

Sheep IgG whole molecule

**Preservatives**

0.01% (w/v) Sodium Azide

**Form/Appearance**

Liquid (sterile filtered)

**Concentration**

2.0 mg/mL

**Storage**

Store vial at 4° C prior to opening. This product is stable for several weeks at 4° C as an undiluted liquid. Dilute only prior to immediate use. For extended storage aliquot contents and freeze at -20° C or below. Avoid cycles of freezing and thawing.

**Note**

For research use only

**Application notes**

Anti-Sheep IgG secondary antibody has been tested by ELISA and is suitable for use in various immunoassays. Specific conditions for reactivity and signal detection should be optimized by the end user.

**Isotype**

IgG

**Clonality**

Polyclonal

**Purity**

Anti-SHEEP IgG Antibody was prepared from monospecific antiserum generated in donkey by immunoaffinity chromatography using Sheep IgG coupled to agarose beads followed by solid phase adsorption(s) to remove any unwanted reactivities. Assay by immunoelectrophoresis resulted in a single precipitin arc against anti-Donkey Serum, Sheep IgG and Sheep Serum.

**Dilution Range**

ELISA: 1:20,000 - 1:100,000, IHC: 1:1,000 - 1:5,000, WB: 1:2,000 - 1:10,000

**Expiration Date**

12 months from date of receipt.