
Product Datasheet

Sheep IgG (H&L) antibody (Alkaline Phosphatase) (orb347954)

Description

Sheep IgG (H&L) antibody (Alkaline Phosphatase)

Species/Host

Donkey

Reactivity

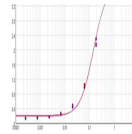
Sheep

Conjugation

AP

Tested

DOT, ELISA, IHC, WB

Applications

 ELISA
results of
purified
Polyclonal
Don...

Immunogen

Sheep IgG whole molecule

Preservatives

0.01% (w/v) Sodium Azide

Form/Appearance

Liquid (sterile filtered)

Concentration

1.0 mg/mL

Storage

Store vial at 4° C before opening. DO NOT FREEZE. This product is stable at 4° C as an undiluted liquid. Dilute only prior to immediate use. Freezing alkaline phosphatase conjugates will result in a substantial loss of enzymatic activity.

Note

For research use only

Application notes

Anti-Sheep IgG Alkaline Phosphatase has been tested by ELISA and dot blot and is assayed against 1.0 ug of Sheep IgG in a standard capture ELISA using pNPP p-nitrophenyl phosphate code # NPP-10 as a substrate for 30 minutes at room temperature. A working dilution of 1:3,000 to 1:14,000 of the reconstitution concentration is suggested for this product.

Isotype

IgG

Clonality

Polyclonal

Purity

This product was prepared from monospecific antiserum by immunoaffinity chromatography using Sheep IgG coupled to agarose beads followed by solid phase adsorption(s) to remove any unwanted reactivities. Assay by immunoelectrophoresis resulted in a single precipitin arc against anti-Alkaline Phosphatase (calf intestine), anti-Donkey Serum, Sheep IgG and Sheep Serum. No reaction was observed against Chicken, Guinea Pig, Hamster, Horse, Human, Mouse, Rabbit and Rat Serum Proteins.

Dilution Range

ELISA: 1:2,000 - 1:10,000, IHC: 1:200 - 1:1,000, WB: 1:500 - 1:2,500

Expiration Date

12 months from date of receipt.