
Product Datasheet

Sheep IgG (H&L) antibody (orb347951)

Description

Sheep IgG (H&L) antibody

Species/Host

Donkey

Reactivity

Sheep

Conjugation

Unconjugated

Tested

ELISA, IHC, WB

Applications
Immunogen

Anti-Sheep IgG (H&L) was produced by repeated immunization with Sheep IgG whole molecule in donkey.

Preservatives

0.01% (w/v) Sodium Azide

Form/Appearance

Liquid (sterile filtered)

Concentration

1.0 mg/mL

Storage

Store vial at 4° C prior to opening. This product is stable for several weeks at 4° C as an undiluted liquid. Dilute only prior to immediate use. For extended storage aliquot contents and freeze at -20° C or below. Avoid cycles of freezing and thawing.

Note

For research use only

Application notes

Anti-Sheep IgG (H&L) has been tested by ELISA and is suitable for use in immunoelectrophoresis, western-blot, competitive western-blot, ELISA and competitive ELISA assays. Specific conditions for reactivity and signal detection should be optimized by the end user.

Isotype

IgG

Clonality

Polyclonal

Purity

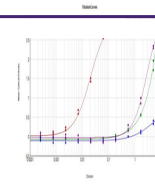
This product was prepared from monospecific antiserum by immunoaffinity chromatography using Sheep IgG coupled to agarose beads followed by solid phase adsorption(s) to remove any unwanted reactivities. Assay by immunoelectrophoresis resulted in a single precipitin arc against anti-Donkey Serum, Sheep IgG and Sheep Serum. No reaction was observed against Chicken, Guinea Pig, Hamster, Horse, Human, Mouse, Rabbit and Rat Serum Proteins.

Dilution Range

ELISA: 1:39,200 - 1:59,200, IHC: 1:1,000 - 1:5,000, WB: 1:2,000 - 1:10,000

Expiration Date

12 months from date of receipt.



ELISA
Results of
Donkey Anti-
Sheep IgG
A...