

## Product Datasheet

### Sheep IgG (H&L) antibody (Biotin) (orb347939)

**Description**

Sheep IgG (H&amp;L) antibody (Biotin)

**Species/Host**

Rabbit

**Reactivity**

Sheep

**Conjugation**

Biotin

**Tested**

DOT, ELISA, IHC, WB

**Applications**
**Immunogen**

Sheep IgG whole molecule

**Preservatives**

0.01% (w/v) Sodium Azide

**Form/Appearance**

Lyophilized

**Concentration**

1.0 mg/mL

**Storage**

Store secondary antibody at 4° C prior to restoration. For extended storage aliquot antibody and freeze at -20° C or below. Avoid cycles of freezing and thawing. Centrifuge product if not completely clear after standing at room temperature. This product is stable for several weeks at 4° C as an undiluted liquid. Dilute only prior to immediate use.

**Note**

For research use only

**Application notes**

Anti-Sheep IgG Biotin Conjugated Antibody has been tested by ELISA and Dot Blot and is suitable for western blot, ELISA and immunohistochemistry as well as other antibody based assays requiring lot-to-lot consistency.

**Isotype**

IgG

**Clonality**

Polyclonal

**Purity**

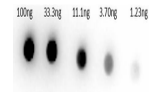
Secondary antibody was prepared from monospecific antiserum by immunoaffinity chromatography using Sheep IgG coupled to agarose beads followed by solid phase adsorption(s) to remove any unwanted reactivities. Assay by immunoelectrophoresis resulted in a single precipitin arc against anti-biotin, anti-Rabbit Serum, Sheep IgG and Sheep Serum. No reaction was observed against Human Serum Proteins.

**Dilution Range**

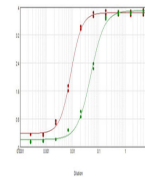
ELISA: 1:20,000 - 1:100,000, IHC: 1:1,000 - 1:5,000, WB: 1:2,000 - 1:10,000

**Expiration Date**

12 months from date of receipt.



Dot Bot of Rabbit Anti-Sheep IgG Biotin ...



ELISA results of purified Rabbit anti-Sh...