
Product Datasheet

Sheep IgG (H&L) antibody (Alkaline Phosphatase) (orb347930)

Description

Sheep IgG (H&L) antibody (Alkaline Phosphatase)

Sheep IgG

Species/Host

Rabbit

Reactivity

Sheep

Conjugation

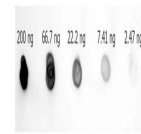
AP

Tested

DOT, ELISA, IHC, WB

Applications
Immunogen

Anti-Sheep IgG (H&L) was produced by repeated immunization with Sheep IgG whole molecule in rabbit.



Dot Blot of Rabbit anti-Sheep IgG antibo...

Preservatives

0.1% (w/v) Sodium Azide

Form/Appearance

Liquid (sterile filtered)

Concentration

1.0 mg/mL

Storage

Store vial at 4° C before opening. DO NOT FREEZE. This product is stable at 4° C as an undiluted liquid. Dilute only prior to immediate use. Freezing alkaline phosphatase conjugates will result in a substantial loss of enzymatic activity.

Note

For research use only

Application notes

Anti-Sheep IgG (H&L) Alkaline Phosphatase has been tested by ELISA and dot blot and is suitable for use in immunoelectrophoresis, western-blot, competitive western-blot, ELISA and competitive ELISA assays. Specific conditions for reactivity and signal detection should be optimized by the end user.

Isotype

IgG

Clonality

Polyclonal

Purity

This product was prepared from monospecific antiserum by immunoaffinity chromatography using Sheep IgG coupled to agarose beads followed by solid phase adsorption(s) to remove any unwanted reactivities. Assay by immunoelectrophoresis resulted in a single precipitin arc against anti-Alkaline Phosphatase (calf intestine), anti-Rabbit Serum, Sheep IgG and Sheep Serum.

Dilution Range

ELISA: 1:5,000, IHC: 1:200 - 1:1,000, WB: 1:500 - 1:2,000

Expiration Date

12 months from date of receipt.