

---

## Product Datasheet

### Sheep IgG (H&L) antibody (Peroxidase) (orb347924)

**Description**

Sheep IgG (H&amp;L) antibody (Peroxidase)


**Species/Host**

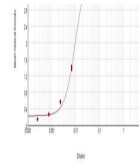
Rabbit

**Reactivity**

Sheep

**Conjugation**

HRP


**Tested Applications**

ELISA, IHC, WB

ELISA results of purified Rabbit anti-Sheep IgG.

**Immunogen**

Anti-Sheep IgG (H&L) was produced by repeated immunization with Sheep IgG whole molecule in rabbit.

**Preservatives**

0.01% (w/v) Gentamicin Sulfate. Do NOT add Sodium Azide!

**Form/Appearance**

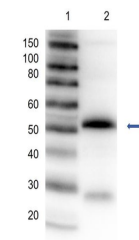
Lyophilized

**Concentration**

2.0 mg/mL

**Storage**

Store vial at 4° C prior to restoration. For extended storage aliquot contents and freeze at -20° C or below. Avoid cycles of freezing and thawing. Centrifuge product if not completely clear after standing at room temperature. This product is stable for several weeks at 4° C as an undiluted liquid. Dilute only prior to immediate use.



Western Blot of Rabbit Anti-Sheep IgG Peroxidase.

**Note**

For research use only

**Application notes**

Anti-Sheep IgG Peroxidase Conjugated Antibody has been tested by ELISA and western blot and is suitable for use in immunoelectrophoresis, western-blot, competitive western-blot, ELISA and competitive ELISA assays. Specific conditions for reactivity and signal detection should be optimized by the end user.

**Isotype**

IgG

**Clonality**

Polyclonal

**Purity**

This product was prepared from monospecific antiserum by immunoaffinity chromatography using Sheep IgG coupled to agarose beads followed by solid phase adsorption(s) to remove any unwanted reactivities. Assay by immunoelectrophoresis resulted in a single precipitin arc against anti-Peroxidase, anti-Rabbit Serum, Sheep IgG and Sheep Serum.

**Dilution Range**

ELISA: 1:40,000 - 1:80,000, IHC: 1:500 - 1:2,500, WB: 1:1,000 - 1:5,000