
Product Datasheet

Sheep IgG F(c) antibody (orb347916)

Description

Sheep IgG F(c) antibody

Species/Host

Rabbit

Reactivity

Sheep

Conjugation

Unconjugated

Tested

ELISA, IHC, WB

Applications
Immunogen

Sheep IgG F(c) fragment

Preservatives

0.01% (w/v) Sodium Azide

Form/Appearance

Liquid (sterile filtered)

Concentration

1.0 mg/mL

Storage

Store vial at 4° C prior to opening. This product is stable for several weeks at 4° C as an undiluted liquid. Dilute only prior to immediate use. For extended storage aliquot contents and freeze at -20° C or below. Avoid cycles of freezing and thawing.

Note

For research use only

Application notes

Anti-Sheep IgG F(c) antibody has been tested by ELISA and is suitable for ELISA, western blot, and immunohistochemistry, as well as other assays requiring lot-to-lot consistency.

Isotype

IgG

Clonality

Polyclonal

Purity

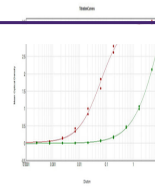
This product was prepared from monospecific antiserum by immunoaffinity chromatography using Sheep IgG coupled to agarose beads. Assay by immunoelectrophoresis resulted in a single precipitin arc against anti-Rabbit Serum, Sheep IgG, Sheep IgG F(c) and Sheep Serum. No reaction was observed against Sheep IgG F(ab). This antibody has been tested by ELISA and/or solid-phase adsorbed to ensure minimal cross-reaction with human serum proteins, but antibodies may cross-react with immunoglobulins from other species.

Dilution Range

ELISA: 1:20,000 - 1:100,000, IHC: 1:1,000 - 1:5,000, WB: 1:2,000 - 1:10,000

Expiration Date

12 months from date of receipt.



ELISA
Results of
Rabbit Anti-
Sheep IgG
F...