

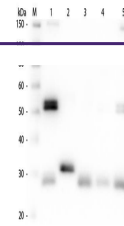
---

## Product Datasheet

### Rat IgG (H&L) antibody (FITC) (orb347880)

**Description**

Rat IgG (H&amp;L) antibody (FITC)



Western Blot of Anti-Rat IgG (H&amp;L) (SHEE...

**Species/Host**

Sheep

**Reactivity**

Rat

**Conjugation**

FITC

**Tested Applications**

FC, FLISA, IF, WB

**Immunogen**

Rat IgG whole molecule

**Preservatives**

0.01% (w/v) Sodium Azide

**Form/Appearance**

Lyophilized

**Concentration**

2.0 mg/mL

**Storage**

Store vial at 4° C prior to restoration. For extended storage aliquot contents and freeze at -20° C or below. Avoid cycles of freezing and thawing. Centrifuge product if not completely clear after standing at room temperature. This product is stable for several weeks at 4° C as an undiluted liquid. Dilute only prior to immediate use.

**Note**

For research use only

**Application notes**

Anti-Rat IgG (H&L) fluorescein Antibody has been tested by ELISA and is designed for immunofluorescence microscopy, fluorescence based plate assays (FLISA) and fluorescent western blotting. This product is also suitable for multiplex analysis, including multicolor imaging, utilizing various commercial platforms.

**Isotype**

IgG

**Clonality**

Polyclonal

**Purity**

This product was prepared from monospecific antiserum by immunoaffinity chromatography using Rat IgG coupled to agarose beads followed by solid phase adsorption(s) to remove any unwanted reactivities. Assay by immunoelectrophoresis resulted in a single precipitin arc against anti-Fluorescein, anti-Sheep Serum, Rat IgG and Rat Serum.

**Dilution Range**

FLISA: 1:10,000 - 1:50,000, FC: 1:500 - 1:2,500, IF: 1:1,000 - 1:5,000

**Expiration Date**

12 months from date of receipt.