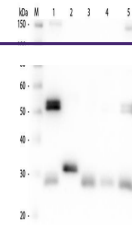

Product Datasheet

Rat IgG (H&L) antibody (orb347879)

Description

Rat IgG (H&L) antibody


 Western Blot
of Anti-Rat
IgG (H&L)
(SHEE...

Species/Host

Sheep

Reactivity

Rat

Conjugation

Unconjugated

Tested

ELISA, IHC, WB

Applications
Immunogen

Rat IgG whole molecule

Preservatives

0.01% (w/v) Sodium Azide

Form/Appearance

Liquid (sterile filtered)

Concentration

2.0 mg/mL

Storage

Store vial at 4° C prior to opening. This product is stable for several weeks at 4° C as an undiluted liquid. Dilute only prior to immediate use. For extended storage aliquot contents and freeze at -20° C or below. Avoid cycles of freezing and thawing.

Note

For research use only

Application notes

Anti-Rat IgG antibody has been tested by ELISA and western blot and is suitable for use in immunohistochemistry. Specific conditions for reactivity should be optimized by the end user.

Isotype

IgG

Clonality

Polyclonal

Purity

This product was prepared from monospecific antiserum by immunoaffinity chromatography using Rat IgG coupled to agarose beads followed by solid phase adsorption(s) to remove any unwanted reactivities. Assay by immunoelectrophoresis resulted in a single precipitin arc against anti-Sheep Serum, Rat IgG and Rat Serum.

Dilution Range

ELISA: 1:20,000 - 1:100,000, IHC: 1:1,000 - 1:5,000, WB: 1:2,000 - 1:10,000

Expiration Date

12 months from date of receipt.