

---

## Product Datasheet

**Rat IgG (H&L) antibody (Alkaline Phosphatase)  
(orb347814)**

**Description**

Rat IgG (H&amp;L) antibody (Alkaline Phosphatase)

**Species/Host**

Goat

**Reactivity**

Rat

**Conjugation**

AP

**Tested Applications**

DOT, ELISA, IHC, WB

**Immunogen**

Rat IgG whole molecule

**Preservatives**

0.1% (w/v) Sodium Azide

**Form/Appearance**

Liquid (sterile filtered)

**Concentration**

1.0 mg/mL

**Storage**

Store vial at 4° C before opening. DO NOT FREEZE. This product is stable at 4° C as an undiluted liquid. Dilute only prior to immediate use. Freezing alkaline phosphatase conjugates will result in a substantial loss of enzymatic activity.

**Note**

For research use only

**Application notes**

Anti-Rat IgG Alkaline Phosphatase antibody has been tested by ELISA, dot blot, and western blot and is suitable for use in immunohistochemistry. Specific conditions for reactivity should be optimized by the end user.

**Isotype**

IgG

**Clonality**

Polyclonal

**Purity**

This product was prepared from monospecific antiserum by immunoaffinity chromatography using Rat IgG coupled to agarose beads followed by solid phase adsorption(s) to remove any unwanted reactivities. Assay by immunoelectrophoresis resulted in a single precipitin arc against anti-Alkaline Phosphatase (calf intestine), anti-Goat Serum, Rat IgG and Rat Serum.

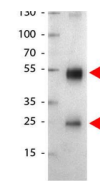
**Dilution Range**

ELISA: 1:50,000 - 1:90,000, IHC: 1:200 - 1:1,000, WB: 1:500 - 1:2,500

**Expiration Date**

12 months from date of receipt.

kDa 1



Western Blot of Alkaline Phosphatase Con...