

---

## Product Datasheet

**Rat IgG (H&L) antibody (Alkaline Phosphatase)  
(orb347792)**

**Description**

Rat IgG (H&amp;L) antibody (Alkaline Phosphatase)

**Species/Host**

Goat

**Reactivity**

Rat

**Conjugation**

AP

**Tested**

DOT, ELISA, IHC, WB

**Applications**
**Immunogen**

Anti-Rat IgG (H&amp;L) was produced by repeated immunization with Rat IgG whole molecule in goat.

**Preservatives**

0.1% (w/v) Sodium Azide

**Form/Appearance**

Liquid (sterile filtered)

**Concentration**

1.0 mg/mL

**Storage**

Store vial at 4° C before opening. DO NOT FREEZE. This product is stable at 4° C as an undiluted liquid. Dilute only prior to immediate use. Freezing alkaline phosphatase conjugates will result in a substantial loss of enzymatic activity.

**Note**

For research use only

**Application notes**

Anti-Rat IgG Alkaline Phosphatase has been tested by ELISA and dot blot and is suitable for immunoblotting (western or dot blot), ELISA, and immunohistochemistry assays requiring lot-to-lot consistency.

**Isotype**

IgG

**Clonality**

Polyclonal

**Purity**

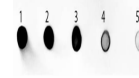
This product was prepared from monospecific antiserum by immunoaffinity chromatography using Rat IgG coupled to agarose beads followed by solid phase adsorption(s) to remove any unwanted reactivities. Assay by immunoelectrophoresis resulted in a single precipitin arc against anti-Alkaline Phosphatase (calf intestine), anti-Goat Serum, Rat IgG and Rat Serum. No reaction was observed against Bovine, Chicken, Goat, Guinea Pig, Hamster, Horse, Human, Mouse, Rabbit and Sheep Serum Proteins.

**Dilution Range**

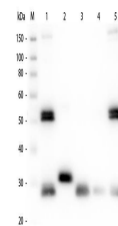
ELISA: 1:1,000 - 1:13,000, IHC: 1:200 - 1:1,000, WB: 1:500 - 1:1,500

**Expiration Date**

12 months from date of receipt.



Dot Blot of Goat anti-Rat IgG (H&L) Anti...



Western Blot of Anti-Rat IgG (H&L) (GOAT...