

---

## Product Datasheet

### Rat IgG (H&L) antibody (FITC) (orb347787)

**Description**

Rat IgG (H&amp;L) antibody (FITC)

**Species/Host**

Goat

**Reactivity**

Rat

**Conjugation**

FITC

**Tested**

FC, FLISA, IF, WB

**Applications**
**Immunogen**

Rat IgG whole molecule

**Preservatives**

0.01% (w/v) Sodium Azide

**Form/Appearance**

Lyophilized

**Concentration**

1.0 mg/mL

**Storage**

Store vial at 4° C prior to restoration. For extended storage aliquot contents and freeze at -20° C or below. Avoid cycles of freezing and thawing. Centrifuge product if not completely clear after standing at room temperature. This product is stable for several weeks at 4° C as an undiluted liquid. Dilute only prior to immediate use.

**Note**

For research use only

**Application notes**

Rat IgG (H&L) Antibody Fluorescein Conjugated Pre-Adsorbed has been tested by western blot and is designed for immunofluorescence microscopy, fluorescence based plate assays (FLISA) and fluorescent western blotting. This product is also suitable for multiplex analysis, including multicolor imaging, utilizing various commercial platforms.

**Isotype**

IgG

**Clonality**

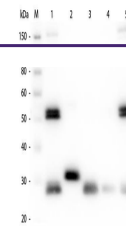
Polyclonal

**Purity**

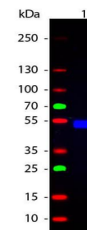
Rat IgG (H&L) Antibody Fluorescein Conjugated Pre-Adsorbed was prepared from monospecific antiserum by immunoaffinity chromatography using Rat IgG coupled to agarose beads followed by solid phase adsorption(s) to remove any unwanted reactivities. Assay by immunoelectrophoresis resulted in a single precipitin arc against anti-Fluorescein, anti-Goat Serum, Rat IgG, and Rat Serum. No reaction was observed against Bovine, Chicken, Goat, Guinea Pig, Hamster, Horse, Human, Mouse, Rabbit and Sheep Serum Proteins.

**Dilution Range**

FLISA: 1:10,000 - 1:50,000, FC: 1:500 - 1:2,500, IF: 1:1,000 - 1:5,000



Western Blot of Anti-Rat IgG (H&L) (GOAT...



Western Blot of Goat anti-Rat IgG Fluore...