

---

## Product Datasheet

**Rabbit IgG (H&L) antibody (Texas Red)  
(orb347770)**

**Description**

Rabbit IgG (H&amp;L) antibody (Texas Red)

**Species/Host**

Donkey

**Reactivity**

Rabbit

**Conjugation**

Texas Red

**Tested Applications**

DOT, FC, FLISA, IF, WB

**Immunogen**

Rabbit IgG whole molecule

**Preservatives**

0.01% (w/v) Sodium Azide

**Form/Appearance**

Lyophilized

**Concentration**

1.0 mg/mL

**Storage**

Store vial at 4° C prior to restoration. For extended storage aliquot contents and freeze at -20° C or below. Avoid cycles of freezing and thawing. Centrifuge product if not completely clear after standing at room temperature. This product is stable for several weeks at 4° C as an undiluted liquid. Dilute only prior to immediate use.

**Note**

For research use only

**Application notes**

Anti-Rabbit IgG (H&L) Texas Red Antibody has been tested by dot blot and western blot and is designed for immunofluorescence microscopy, fluorescence based plate assays (FLISA) and fluorescent western blotting. This product is also suitable for multiplex analysis, including multicolor imaging, utilizing various commercial platforms.

**Isotype**

IgG

**Clonality**

Polyclonal

**Purity**

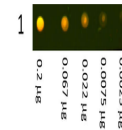
This product was prepared from monospecific antiserum by immunoaffinity chromatography using Rabbit IgG coupled to agarose beads followed by solid phase adsorption(s) to remove any unwanted reactivities. Assay by immunoelectrophoresis resulted in a single precipitin arc against anti-Donkey Serum, Rabbit IgG, and Rabbit Serum.

**Dilution Range**

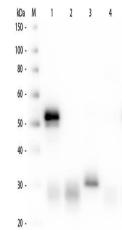
FLISA: 1:10,000 - 1:50,000, FC: 1:500 - 1:2,500, IF: 1:1,000 - 1:5,000

**Expiration Date**

12 months from date of receipt.



Dot Blot showing the detection of Rabbit...



Western Blot of Anti-Rabbit IgG (H&L) (D...