

Product Datasheet

Rabbit IgG (H&L) Antibody Alkaline Phosphatase Conjugated Pre-Adsorbed (orb347760)

Description	Rabbit IgG (H&L) antibody (Alkaline Phosphatase)
Species/Host	Donkey
Reactivity	Rabbit
Conjugation	AP
Tested Applications	DOT, ELISA, IHC, WB
Immunogen	Anti-Rabbit IgG (H&L) was produced by repeated immunization with Rabbit IgG whole molecule in donkey
Preservatives	0.01% (w/v) Sodium Azide
Form/Appearance	Liquid (sterile filtered)
Concentration	1.0 mg/mL
Storage	Store vial at 4° C before opening. DO NOT FREEZE. This product is stable at 4° C as an undiluted liquid. Dilute only prior to immediate use. Freezing alkaline phosphatase conjugates will result in a substantial loss of enzymatic activity.
Note	For research use only
Application notes	Anti-Rabbit IgG (H&L) Alkaline Phosphatase Antibody has been tested by dot blot and ELISA and is suitable for immunoblotting (western or dot blot), ELISA, and immunohistochemistry assays requiring lot-to-lot consistency.
Isotype	IgG
Clonality	Polyclonal

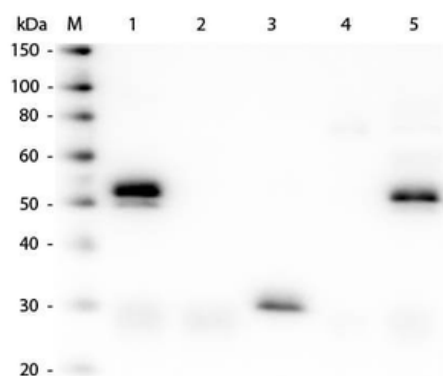
Biorbyt Ltd.

7 Signet Court, Swann's Road,
Cambridge, CB5 8LA, United Kingdom
Email: info@biorbyt.com, support@biorbyt.com
Phone: [+44 \(0\) 1223 859-353](tel:+44(0)1223859353) | Fax: [+1 \(415\) 651-8558](tel:+1(415)6518558)

Biorbyt LLC.

68 TW Alexander Drive,
Durham, NC, 27713, United States
Email: info@biorbyt.com, support@biorbyt.com
Phone: [+1 \(415\) 906-5211](tel:+1(415)9065211) | Fax: [+1 \(415\) 651-8558](tel:+1(415)6518558)

Purity	This product was prepared from monospecific antiserum by immunoaffinity chromatography using Rabbit IgG coupled to agarose beads followed by solid phase adsorption(s) to remove any unwanted reactivities. Assay by immunoelectrophoresis resulted in a single precipitin arc against anti-Alkaline Phosphatase (calf intestine), anti-Donkey Serum, Rabbit IgG and Rabbit Serum. No reaction was observed against Bovine, Chicken, Goat, Guinea Pig, Hamster, Horse, Human, Mouse, Rat and Sheep Serum Proteins.
Dilution Range	ELISA: 1:10,000 - 1:20,000, IHC: 1:400 - 1:2,000, WB: 1:1,000 - 1:5,000
Expiration Date	12 months from date of receipt.



Western Blot of Anti-Rabbit IgG (H&L) (DONKEY) Antibody (Min X Bv Ch Gt GP Ham Hs Hu Ms Rt & Sh Serum Proteins) (p/n orb347754). Lane M: 3 μ l Molecular Ladder. Lane 1: Rabbit IgG whole molecule (p/n orb2652747). Lane 2: Rabbit IgG F(ab) Fragment (p/n orb2652745). Lane 3: Rabbit IgG F(c) Fragment (p/n orb346280). Lane 4: Rabbit IgM Whole Molecule (p/n orb346313). Lane 5: Normal Rabbit Serum. All samples were reduced. Load: 50 ng of IgG, F(ab), F(c) and Serum, 25 ng of IgM. Block: orb348637 for 30 min at RT. Primary Antibody: Anti-Rabbit IgG (H&L) (DONKEY) Antibody (Min X Bv Ch Gt GP Ham Hs Hu Ms Rt & Sh Serum Proteins) (p/n orb347754) 1:7500 for 60 min at RT. Secondary antibody: Anti-Donkey IgG (GOAT) Peroxidase Conjugated Antibody (p/n orb347994) 1:40000 in orb348637 for 30 min at RT. Predicted/Observed Size: 25 and 50 kDa for Rabbit IgG and Serum, 25 kDa for F(c) and F(ab), 70 and 23 kDa for IgM. Rabbit F(c) migrates slightly higher.

Biorbyt Ltd.

7 Signet Court, Swann's Road,
Cambridge, CB5 8LA, United Kingdom
Email: info@biorbyt.com, support@biorbyt.com
Phone: [+44 \(0\) 1223 859-353](tel:+44(0)1223859353) | Fax: [+1 \(415\) 651-8558](tel:+1(415)6518558)

Biorbyt LLC.

68 TW Alexander Drive,
Durham, NC, 27713, United States
Email: info@biorbyt.com, support@biorbyt.com
Phone: [+1 \(415\) 906-5211](tel:+1(415)9065211) | Fax: [+1 \(415\) 651-8558](tel:+1(415)6518558)