

Product Datasheet

Rabbit IgG (H&L) Antibody Texas Red Conjugated (orb347749)

Description	Rabbit IgG (H&L) antibody (Texas Red)
Species/Host	Sheep
Reactivity	Rabbit
Conjugation	Texas Red
Tested Applications	DOT, FC, FLISA, IF
Immunogen	Rabbit IgG whole molecule
Preservatives	0.01% (w/v) Sodium Azide
Form/Appearance	Lyophilized
Concentration	2.2 mg/mL
Storage	Store vial at 4° C prior to restoration. For extended storage aliquot contents and freeze at -20° C or below. Avoid cycles of freezing and thawing. Centrifuge product if not completely clear after standing at room temperature. This product is stable for several weeks at 4° C as an undiluted liquid. Dilute only prior to immediate use.
Note	For research use only
Application notes	Anti-Rabbit IgG Antibody Texas Red conjugated antibody has been tested by dot blot and is designed for immunofluorescence microscopy, fluorescence based plate assays (FLISA) and fluorescent western blotting. This product is also suitable for multiplex analysis, including multicolor imaging, utilizing various commercial platforms.
Isotype	IgG
Clonality	Polyclonal

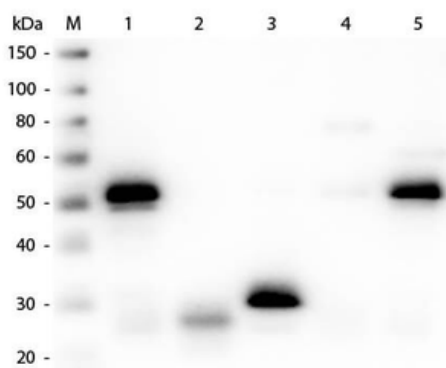
Biorbyt Ltd.

7 Signet Court, Swann's Road,
Cambridge, CB5 8LA, United Kingdom
Email: info@biorbyt.com, support@biorbyt.com
Phone: [+44 \(0\) 1223 859-353](tel:+44(0)1223859353) | Fax: [+1 \(415\) 651-8558](tel:+1(415)6518558)

Biorbyt LLC.

68 TW Alexander Drive,
Durham, NC, 27713, United States
Email: info@biorbyt.com, support@biorbyt.com
Phone: [+1 \(415\) 906-5211](tel:+1(415)9065211) | Fax: [+1 \(415\) 651-8558](tel:+1(415)6518558)

Purity	This product was prepared from monospecific antiserum by immunoaffinity chromatography using Rabbit IgG coupled to agarose beads followed by solid phase adsorption(s) to remove any unwanted reactivities. Assay by immunoelectrophoresis resulted in a single precipitin arc against anti-Sheep Serum, Rabbit IgG and Rabbit Serum.
Dilution Range	FLISA: 1:10,000 - 1:50,000, FC: 1:500 - 1:2,500, IF: 1:1,000 - 1:5,000
Expiration Date	12 months from date of receipt.



Western Blot of Anti-Rabbit IgG (H&L) (SHEEP) Antibody (Min X Hu, Gt, Ms Serum Proteins) (p/n orb347744). Lane M: 3 μ l Molecular Ladder. Lane 1: Rabbit IgG whole molecule (p/n orb2652747). Lane 2: Rabbit IgG F(ab) Fragment (p/n orb2652745). Lane 3: Rabbit IgG F(c) Fragment (p/n orb346280). Lane 4: Rabbit IgM Whole Molecule (p/n orb346313). Lane 5: Normal Rabbit Serum. All samples were reduced. Load: 50 ng per lane. Block: orb348637 for 30 min at RT. Primary Antibody: Anti-Rabbit IgG (H&L) (SHEEP) Antibody (Min X Hu, Gt, Ms Serum Proteins) (p/n orb347744) 1:3000 for 60 min at RT. Secondary antibody: Anti-Sheep IgG (DONKEY) Peroxidase Conjugated Antibody (p/n orb347953) 1:40000 in orb348637 for 30 min at RT. Predicted/Observed Size: 25 and 50 kDa for Rabbit IgG and Serum, 25 kDa for F(c) and F(ab), 70 and 23 kDa for IgM. Rabbit F(c) migrates slightly higher.

Biorbyt Ltd.

7 Signet Court, Swann's Road,
Cambridge, CB5 8LA, United Kingdom
Email: info@biorbyt.com, support@biorbyt.com
Phone: [+44 \(0\) 1223 859-353](tel:+44(0)1223859353) | Fax: [+1 \(415\) 651-8558](tel:+1(415)6518558)

Biorbyt LLC.

68 TW Alexander Drive,
Durham, NC, 27713, United States
Email: info@biorbyt.com, support@biorbyt.com
Phone: [+1 \(415\) 906-5211](tel:+1(415)9065211) | Fax: [+1 \(415\) 651-8558](tel:+1(415)6518558)