
Product Datasheet

**RABBIT IgG (H&L) antibody (Alkaline Phosphatase)
(orb347747)**

Description

RABBIT IgG (H&L) antibody (Alkaline Phosphatase)

Species/Host

Sheep

Reactivity

Rabbit

Conjugation

AP

Tested Applications

DOT, ELISA, IHC, WB

Immunogen

Rabbit IgG whole molecule

Preservatives

0.01% (w/v) Sodium Azide

Form/Appearance

Liquid (sterile filtered)

Concentration

1.0 mg/mL

Storage

Store vial at 4° C before opening. DO NOT FREEZE. This product is stable at 4° C as an undiluted liquid. Dilute only prior to immediate use. Freezing alkaline phosphatase conjugates will result in a substantial loss of enzymatic activity.

Note

For research use only

Application notes

Anti-Rabbit IgG Alkaline Phosphatase antibody has been tested by ELISA, dot blot, and western blot and is suitable for immunohistochemistry applications. Specific conditions for reactivity should be optimized by the researcher.

Isotype

IgG

Clonality

Polyclonal

Purity

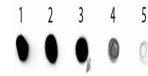
Anti-Rabbit IgG Antibody Alkaline Phosphatase Conjugated was prepared from monospecific antiserum by immunoaffinity chromatography using Rabbit IgG coupled to agarose beads followed by solid phase adsorption(s) to remove any unwanted reactivities. Assay by immunoelectrophoresis resulted in a single precipitin arc against anti-Alkaline Phosphatase (calf intestine), anti-Sheep Serum, Rabbit IgG and Rabbit Serum.

Dilution Range

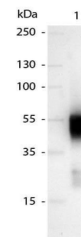
ELISA: 1:15,000, IHC: 1:200 - 1:1,000, WB: 1:500 - 1:2,000

Expiration Date

12 months from date of receipt.



Dot Blot of Sheep anti-Rabbit IgG Antibo...



Western blot of Alkaline Phosphatase con...