

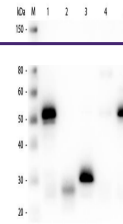
---

## Product Datasheet

### Rabbit IgG (H&L) antibody (Biotin) (orb347742)

**Description**

Rabbit IgG (H&amp;L) antibody (Biotin)



Western Blot of Anti-Rabbit IgG (H&amp;L) (S...

**Species/Host**

Sheep

**Reactivity**

Rabbit

**Conjugation**

Biotin

**Tested Applications**

ELISA, IHC, WB

**Immunogen**

Rabbit IgG whole molecule

**Preservatives**

0.01% (w/v) Sodium Azide

**Form/Appearance**

Lyophilized

**Concentration**

1.0 mg/mL

**Storage**

Store vial at 4° C prior to restoration. For extended storage aliquot contents and freeze at -20° C or below. Avoid cycles of freezing and thawing. Centrifuge product if not completely clear after standing at room temperature. This product is stable for several weeks at 4° C as an undiluted liquid. Dilute only prior to immediate use.

**Note**

For research use only

**Application notes**

This product has been assayed against 1.0 ug of Rabbit IgG in a standard capture ELISA using Peroxidase Conjugated Streptavidin #S000-03 and ABTS (2,2'-azino-bis-[3-ethylbenthiiazoline-6-sulfonic acid]) code # ABTS-100 as a substrate for 30 minutes at room temperature. A working dilution of 1:20,000 to 1:80,000 of the reconstitution concentration is suggested for this product.

**Isotype**

IgG

**Clonality**

Polyclonal

**Purity**

This product was prepared from monospecific antiserum by immunoaffinity chromatography using Rabbit IgG coupled to agarose beads followed by solid phase adsorption(s) to remove any unwanted reactivities. Assay by immunoelectrophoresis resulted in a single precipitin arc against anti-biotin, anti-Sheep Serum, Rabbit IgG and Rabbit Serum. No reaction was observed against Bovine, Chicken, Goat, Guinea Pig, Horse, Human, Mouse, Rat and Sheep Serum Proteins.

**Dilution Range**

ELISA: 1:20,000 - 1:100,000, IHC: 1:1,000 - 1:5,000, WB: 1:2,000 - 1:10,000