

Product Datasheet

Rabbit IgG (H&L) antibody (Alkaline Phosphatase) (orb347741)

Description

Rabbit IgG (H&L) antibody (Alkaline Phosphatase)

10 8 6 4 2

Species/Host

Sheep

Reactivity

Rabbit

Conjugation

AP

Tested

ELISA, IHC, WB

Applications

Immunogen

Rabbit IgG whole molecule

Preservatives

0.01% (w/v) Sodium Azide

Form/Appearance

Liquid (sterile filtered)

Concentration

1.0 mg/mL

Storage

Store vial at 4° C before opening. DO NOT FREEZE. This product is stable at 4° C as an undiluted liquid. Dilute only prior to immediate use. Freezing alkaline phosphatase conjugates will result in a substantial loss of enzymatic activity.

Note

For research use only

Application notes

This product has been assayed against 1.0 ug of Rabbit IgG in a standard capture ELISA using pNPP p-nitrophenyl phosphate code # NPP-10 as a substrate for 30 minutes at room temperature. A working dilution of 1:4,000 to 1:16,000 is suggested for this product.

Isotype

IgG

Clonality

Polyclonal

Purity

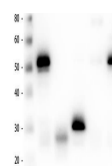
This product was prepared from monospecific antiserum by immunoaffinity chromatography using Rabbit IgG coupled to agarose beads followed by solid phase adsorption(s) to remove any unwanted reactivities. Assay by immunoelectrophoresis resulted in a single precipitin arc against anti-Alkaline Phosphatase (calf intestine), anti-Sheep Serum, Rabbit IgG and Rabbit Serum. No reaction was observed against Bovine, Chicken, Goat, Guinea Pig, Horse, Human, Mouse, Rat and Sheep Serum Proteins.

Dilution Range

ELISA: 1:2,000 - 1:10,000, IHC: 1:200 - 1:1,000, WB: 1:500 - 1:2,500

Expiration Date

12 months from date of receipt.



Western
Blot of Anti-
Rabbit IgG
(H&L) (S...