
Product Datasheet

RABBIT IgG (H&L) antibody (orb347723)

Description

RABBIT IgG (H&L) antibody

Species/Host

Mouse

Reactivity

Rabbit

Conjugation

Unconjugated

Tested

ELISA, IHC, WB

Applications
Immunogen

Anti-Rabbit IgG (H&L) was produced by repeated immunization with rabbit whole IgG molecule in mouse.

Preservatives

0.01% (w/v) Sodium Azide. 0.02 M Potassium Phosphate, 0.15 M Sodium Chloride, pH 7.2

Form/Appearance

Liquid (sterile filtered)

Concentration

1.1 mg/mL

Storage

Store vial at 4° C prior to opening. This product is stable for several weeks at 4° C as an undiluted liquid. Dilute only prior to immediate use. For extended storage aliquot contents and freeze at -20° C or below. Avoid cycles of freezing and thawing.

Note

For research use only

Application notes

Anti-Rabbit IgG (H&L) has been tested by ELISA and western blot and is suitable for use in immunoelectrophoresis, western-blot, competitive western-blot, ELISA and competitive ELISA assays. Specific conditions for reactivity and signal detection should be optimized by the end user.

Isotype

IgG

Clonality

Polyclonal

Purity

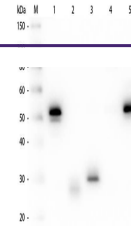
This product was prepared from monospecific polyclonal ascites by immunoaffinity chromatography using Rabbit IgG coupled to agarose beads followed by solid phase adsorption(s) to remove any unwanted reactivities. Assay by immunoelectrophoresis resulted in a single precipitin arc against anti-Mouse Serum, Rabbit IgG and Rabbit Serum. No reaction was observed against Goat, Human or Mouse Serum Proteins.

Dilution Range

ELISA: 1:65,000, IHC: 1:1,000 - 1:5,000, WB: 1:3,000 - 1:30,000

Expiration Date

12 months from date of receipt.



Western Blot of Anti-Rabbit IgG (H&L) (M...