
Product Datasheet

RABBIT IgG (H&L) antibody (orb347716)

Description

RABBIT IgG (H&L) antibody

Species/Host

Guinea pig

Reactivity

Rabbit

Conjugation

Unconjugated

Tested

ELISA, IHC, WB

Applications
Immunogen

Rabbit IgG whole molecule

Preservatives

0.01% (w/v) Sodium Azide

Form/Appearance

Liquid (sterile filtered)

Concentration

1.21 mg/ml

Storage

Store vial at 4° C prior to opening. This product is stable for several weeks at 4° C as an undiluted liquid. Dilute only prior to immediate use. For extended storage aliquot contents and freeze at -20° C or below. Avoid cycles of freezing and thawing.

Note

For research use only

Application notes

Anti-Rabbit IgG antibody has been tested by ELISA, SDS-PAGE, and Western Blot and is suitable for use in immunohistochemistry. Specific conditions for reactivity should be optimized by the end user.

Isotype

IgG

Clonality

Polyclonal

Purity

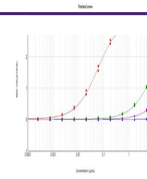
This product was prepared from monospecific antiserum by immunoaffinity chromatography using Rabbit IgG coupled to agarose beads followed by solid phase adsorption(s) to remove any unwanted reactivities. Assay by immunoelectrophoresis resulted in a single precipitin arc against anti-Guinea Pig Serum, Rabbit IgG and Rabbit Serum. No reaction was observed against Goat, Human and Mouse Serum Proteins.

Dilution Range

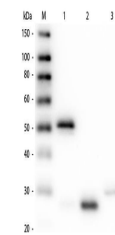
ELISA: 1:15,500 - 1:17,500, IHC: 1:1,000 - 1:5,000, WB: 1:2,000 - 1:10,000

Expiration Date

12 months from date of receipt.



ELISA
Results of
Purified
Guinea Pig
Ant...



Western Blot
of Anti-
Rabbit IgG
(H&L) (G...