
Product Datasheet

RABBIT IgG (H&L) antibody (TRITC) (orb347715)

Description

RABBIT IgG (H&L) antibody (TRITC)

Species/Host

Guinea pig

Reactivity

Rabbit

Conjugation

TRITC

Tested Applications

DOT, FC, FLISA, IF

Immunogen

Rabbit IgG whole molecule

Preservatives

0.01% (w/v) Sodium Azide

Form/Appearance

Lyophilized

Concentration

1.0 mg/mL

Storage

Store vial at 4° C prior to restoration. For extended storage aliquot contents and freeze at -20° C or below. Avoid cycles of freezing and thawing. Centrifuge product if not completely clear after standing at room temperature. This product is stable for several weeks at 4° C as an undiluted liquid. Dilute only prior to immediate use.

Note

For research use only

Application notes

Anti-Rabbit IgG Antibody Rhodamine Conjugated has been tested by dot blot and is designed for immunofluorescence microscopy, fluorescence based plate assays (FLISA) and fluorescent western blotting. This product is also suitable for multiplex analysis, including multicolor imaging, utilizing various commercial platforms.

Isotype

IgG

Clonality

Polyclonal

Purity

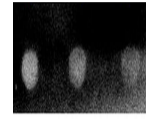
This product was prepared from monospecific antiserum by immunoaffinity chromatography using Rabbit IgG coupled to agarose beads followed by solid phase adsorption(s) to remove any unwanted reactivities. Assay by immunoelectrophoresis resulted in a single precipitin arc against anti-Guinea Pig Serum, Rabbit IgG and Rabbit Serum. No reaction was observed against Goat, Human and Mouse Serum Proteins.

Dilution Range

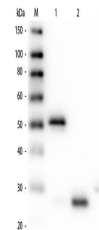
FLISA: 1:10,000 - 1:50,000, FC: 1:500 - 1:2,500, IF: 1:1,000 - 1:5,000

Expiration Date

12 months from date of receipt.



Dot Blot results of Guinea Pig Anti-Rabb...



Western Blot of Anti-Rabbit IgG (H&L) (G...