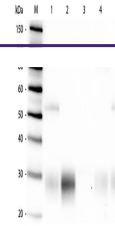

Product Datasheet

Rabbit IgG F(ab')₂ antibody (Alkaline Phosphatase) (orb347691)

Description

 Rabbit IgG F(ab')₂ antibody (Alkaline)

 Western
Blot of Anti-
Rabbit IgG
F(ab')₂ ...

Species/Host	Goat
Reactivity	Rabbit
Conjugation	AP
Tested Applications	DOT, ELISA, IHC, WB
Immunogen	Rabbit IgG F(ab') ₂ fragment
Preservatives	0.01% (w/v) Sodium Azide
Form/Appearance	Liquid (sterile filtered)
Concentration	1.0 mg/mL
Storage	Store vial at 4° C before opening. DO NOT FREEZE. This product is stable at 4° C as an undiluted liquid. Dilute only prior to immediate use. Freezing alkaline phosphatase conjugates will result in a substantial loss of enzymatic activity.
Note	For research use only
Application notes	Anti-Rabbit IgG F(ab') ₂ Alkaline Phosphatase Antibody has been tested by ELISA and dot blot and is assayed against 1.0 ug of Rabbit IgG in a standard capture ELISA using pNPP p-nitrophenyl phosphate code # NPP-10 as a substrate for 30 minutes at room temperature. A working dilution of 1:500 to 1:2,100 of the reconstitution concentration is suggested for this product.
Isotype	IgG
Clonality	Polyclonal
Purity	This product was prepared from monospecific antiserum by immunoaffinity chromatography using Rabbit IgG coupled to agarose beads followed by solid phase adsorption(s) to remove any unwanted reactivities. Assay by immunoelectrophoresis resulted in a single precipitin arc against anti-Alkaline Phosphatase (calf intestine), anti-Goat Serum, Rabbit IgG, Rabbit IgG F(ab') ₂ and Rabbit Serum. No reaction was observed against Rabbit IgG F(c) or Human Serum Proteins.
Dilution Range	ELISA: 1:2,000 - 1:10,000, IHC: 1:200 - 1:1,000, WB: 1:500 - 1:2,500