

---

## Product Datasheet

**Rabbit IgG F(c) antibody (Alkaline Phosphatase)  
(orb347690)**

**Description**

Rabbit IgG F(c) antibody (Alkaline Phosphatase)

**Species/Host**

Goat

**Reactivity**

Rabbit

**Conjugation**

AP

**Tested Applications**

DOT, ELISA, IHC, WB

**Immunogen**

Rabbit IgG F(c) fragment

**Preservatives**

0.05% (w/v) Sodium Azide

**Form/Appearance**

Liquid (sterile filtered)

**Concentration**

1.0 mg/mL

**Storage**

Store vial at 4° C before opening. DO NOT FREEZE. This product is stable at 4° C as an undiluted liquid. Dilute only prior to immediate use. Freezing alkaline phosphatase conjugates will result in a substantial loss of enzymatic activity.

**Note**

For research use only

**Application notes**

Anti-Rabbit IgG F(c) alkaline phosphatase antibody has been tested by ELISA and dot blot and is assayed against 1.0 µg of Rabbit IgG in a standard capture ELISA using pNPP p-nitrophenyl phosphate code # NPP-10 as a substrate for 30 minutes at room temperature. A working dilution of 1:3,000 to 1:15,000 is suggested for this product.

**Isotype**

IgG

**Clonality**

Polyclonal

**Purity**

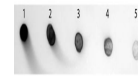
This product was prepared from monospecific antiserum by immunoaffinity chromatography using Rabbit IgG coupled to agarose beads followed by solid phase adsorption(s) to remove any unwanted reactivities. Assay by immunoelectrophoresis resulted in a single precipitin arc against anti-Alkaline Phosphatase (calf intestine), anti-Goat Serum, Rabbit IgG, Rabbit IgG F(c) and Rabbit Serum. No reaction was observed against Rabbit IgG F(ab) or Human Serum Proteins.

**Dilution Range**

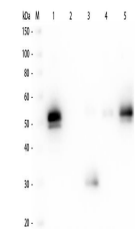
ELISA: 1:2,000 - 1:10,000, IHC: 1:200 - 1:1,000, WB: 1:500 - 1:2,500

**Expiration Date**

12 months from date of receipt.



Dot Blot of Goat anti-Rabbit IgG Fc Anti...



Western Blot of Anti-Rabbit IgG F(c) (GO...