

---

## Product Datasheet

**Rabbit IgG (H&L) antibody (Alkaline Phosphatase)  
(orb347688)**

**Description**

Rabbit IgG (H&amp;L) antibody (Alkaline Phosphatase)

**Species/Host**

Goat

**Reactivity**

Rabbit

**Conjugation**

AP

**Tested Applications**

DOT, ELISA, IHC, WB

**Immunogen**

Rabbit IgG whole molecule

**Preservatives**

0.1% (w/v) Sodium Azide

**Form/Appearance**

Liquid (sterile filtered)

**Concentration**

1.0 mg/mL

**Storage**

Store vial at 4° C before opening. DO NOT FREEZE. This product is stable at 4° C as an undiluted liquid. Dilute only prior to immediate use. Freezing alkaline phosphatase conjugates will result in a substantial loss of enzymatic activity.

**Note**

For research use only

**Application notes**

Antibody Anti-Rabbit IgG (H&L) Alkaline Phosphatase Antibody has been tested by ELISA and dot blot and is suitable for immunoblotting (western or dot blot), ELISA, and immunohistochemistry assays requiring lot-to-lot consistency.

**Isotype**

IgG

**Clonality**

Polyclonal

**Purity**

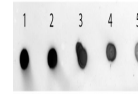
This product was prepared from monospecific antiserum by immunoaffinity chromatography using Rabbit IgG coupled to agarose beads followed by solid phase adsorption(s) to remove any unwanted reactivities. Assay by immunoelectrophoresis resulted in a single precipitin arc against anti-Alkaline Phosphatase (calf intestine), anti-Goat Serum, Rabbit IgG and Rabbit Serum. No reaction was observed against Human Serum Proteins.

**Dilution Range**

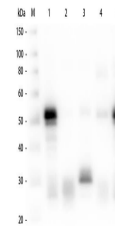
ELISA: 1:2,000 - 1:10,000, IHC: 1:200 - 1:1,000, WB: 1:500 - 1:2,500

**Expiration Date**

12 months from date of receipt.



Dot Blot of Goat anti-Rabbit IgG (Min X ...



Western Blot of Anti-Rabbit IgG (H&L) (G...